

DX420LC

Operating Weight:

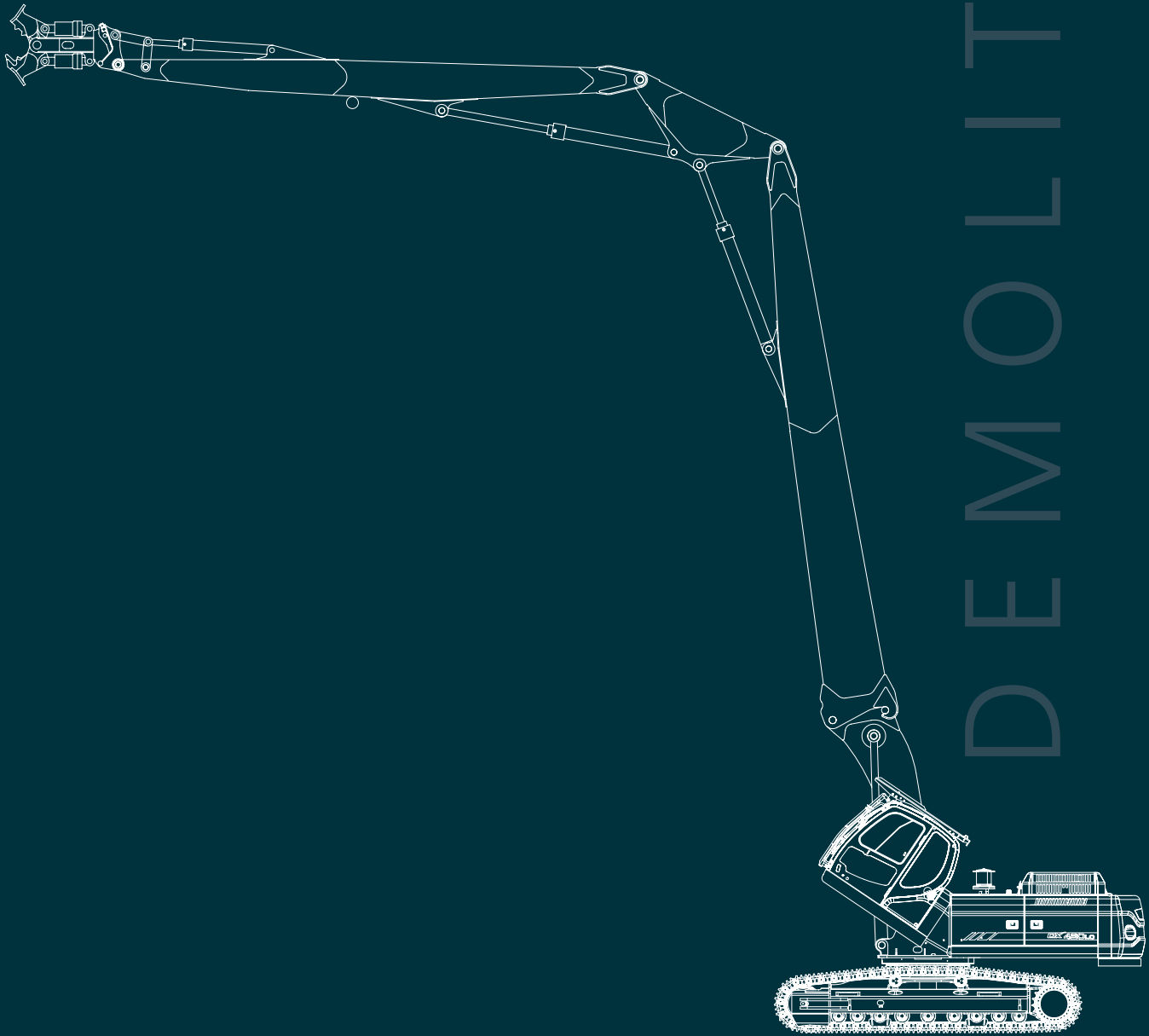
47.500 kg

Engine Power:

218 kW (293 Hp) / 1.800 rpm

Attachment Weight (max.):

2.200 kg



DEMOLITION

DOOSAN DAEWOO

TECHNICAL SPECIFICATIONS

* ENGINE

• Model

DOOSAN DV11
 "Common Rail" engine with direct fuel injection and electronic control, 4 valves per cylinder, vertical injectors, water cooled, turbo charged with air to air intercooler. The emission levels are well below the values required for Phase III.

• Number of cylinders

6

• Nominal flywheel power

218 kW (297 Ps) at 1.800 rpm (DIN 6271 net)
 218 kW (293 Hp) at 1.800 rpm (SAE J 1349 net)

• Max torque

140 m.kg (1.373 Nm) at 1.300 rpm

• Piston displacement

10.964 cc

• Air cleaner

Double element and pre-filtered Turbo with auto dust evacuation.

* ENVIRONMENT

Noise levels comply with environmental regulations (dynamic values).

• Sound level guarantee

104 dB(A) (2000/14/EC)

• Cab sound level

73 dB(A) (6396/14/EC)

* HYDRAULIC SYSTEM

The heart of the system is the e-EPOS (Electronic Power Optimizing System). It allows the efficiency of the system to be optimized for all working conditions and minimizes fuel consumption.

The new e-EPOS is connected to the engine electronic control via a data transfer link to harmonize the operation of the engine and hydraulics.

- The hydraulic system enables independent or combined operations.
- Two travel speeds offer either increased torque or high speed tracking.
- Cross-sensing pump system for fuel savings.
- Auto deceleration system.
- Two operating modes, two power modes.
- Button control of flow in auxiliary equipment circuits.
- Computer-aided pump power control.

• Main pumps

2 variable displacement axial piston pumps
 Max. flow: 2 x 315 l/min

• Pilot pump

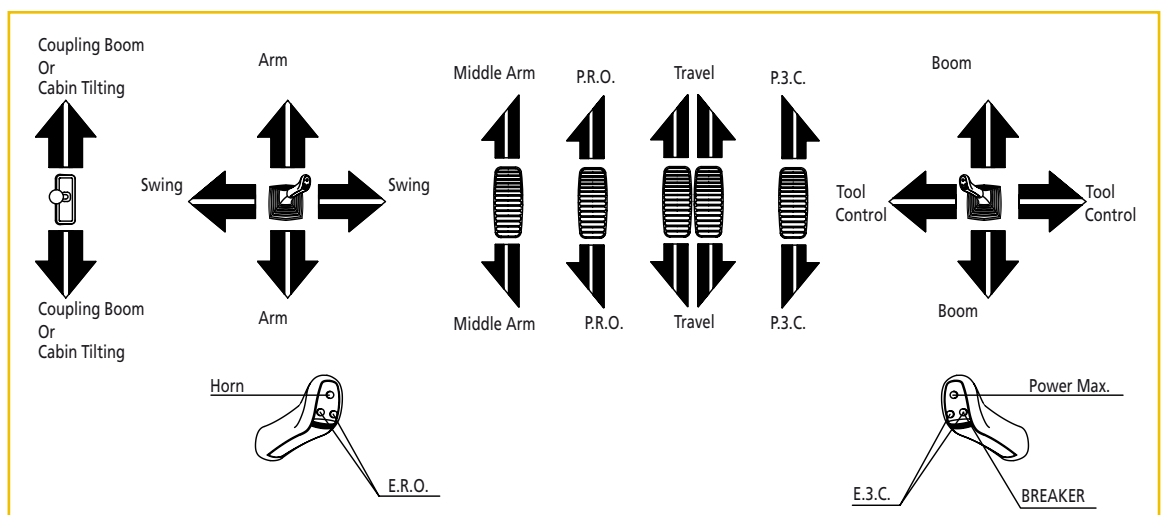
Gear pump – max. flow: 22 l/min

• Main relief valves

Boom/arm/bucket:
 Normal mode: 320 kg/cm² (314 bar)
 Power mode: 350 kg/cm² (343 bar)
 Travel: 320 kg/cm² (314 bar)
 Rotation: 270 kg/cm² (265 bar)

* CONTROLS

When lower boom to park or transport, you must use security release switch because the system can not allow to lower boom for safety.



STANDARD EQUIPMENT

* STANDARD EQUIPMENT

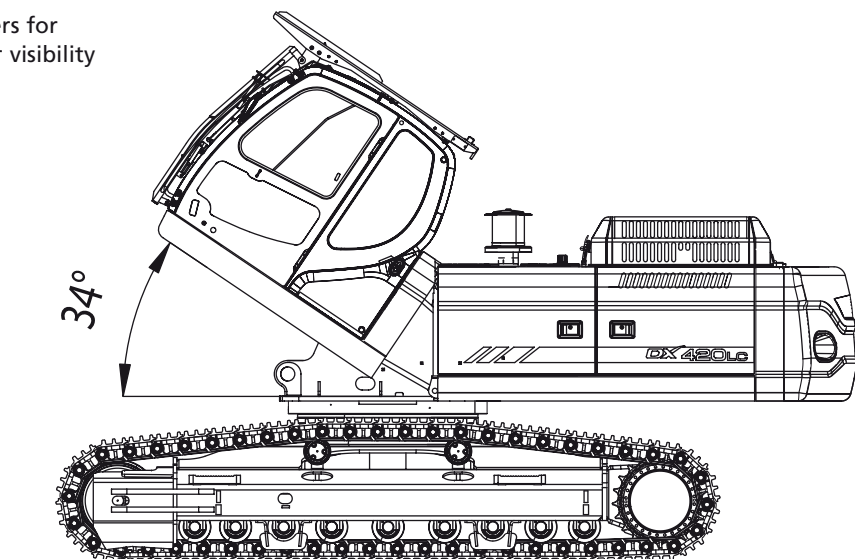
• Hydraulic system

- Boom and arm flow regeneration
- Boom and arm holding valves
- Swing anti-rebound valves
- Spare ports (valve)
- One-touch power boost
- Piping for hammer (one way)
- Piping for crusher
- Piping for rotating

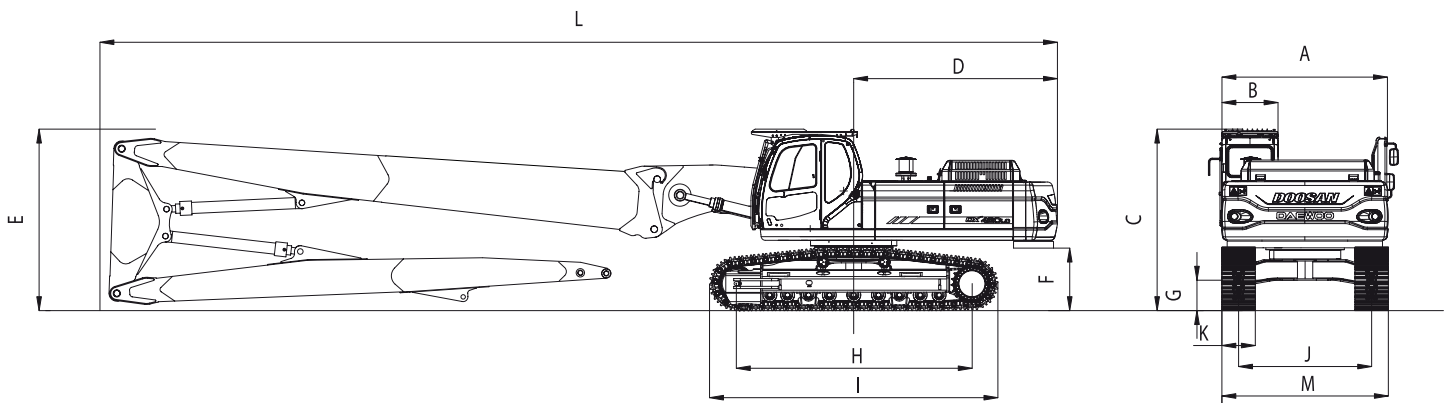
• Cab & Interior

- Cab mounted on viscous supports
- Air conditioning
- Adjustable suspension seat with head rest and adjustable arm rests
- Sliding front window removable in two parts
- Room light
- Intermittent windshield wiper
- Cigarette lighter and ashtray
- Cup holder
- Hot and cool box
- Colour monitor display
- Fuel control dial
- Remote radio ON/OFF switch on console
- Loudspeakers and connections for radio
- 12 V power outlet
- PC interface port for diagnostics
- Hydraulic control levers with 3 switches
- Sun visor
- Sunroof

Tilting cabin activated by 2 cylinders for better stability of Cabin and easier visibility of tools.



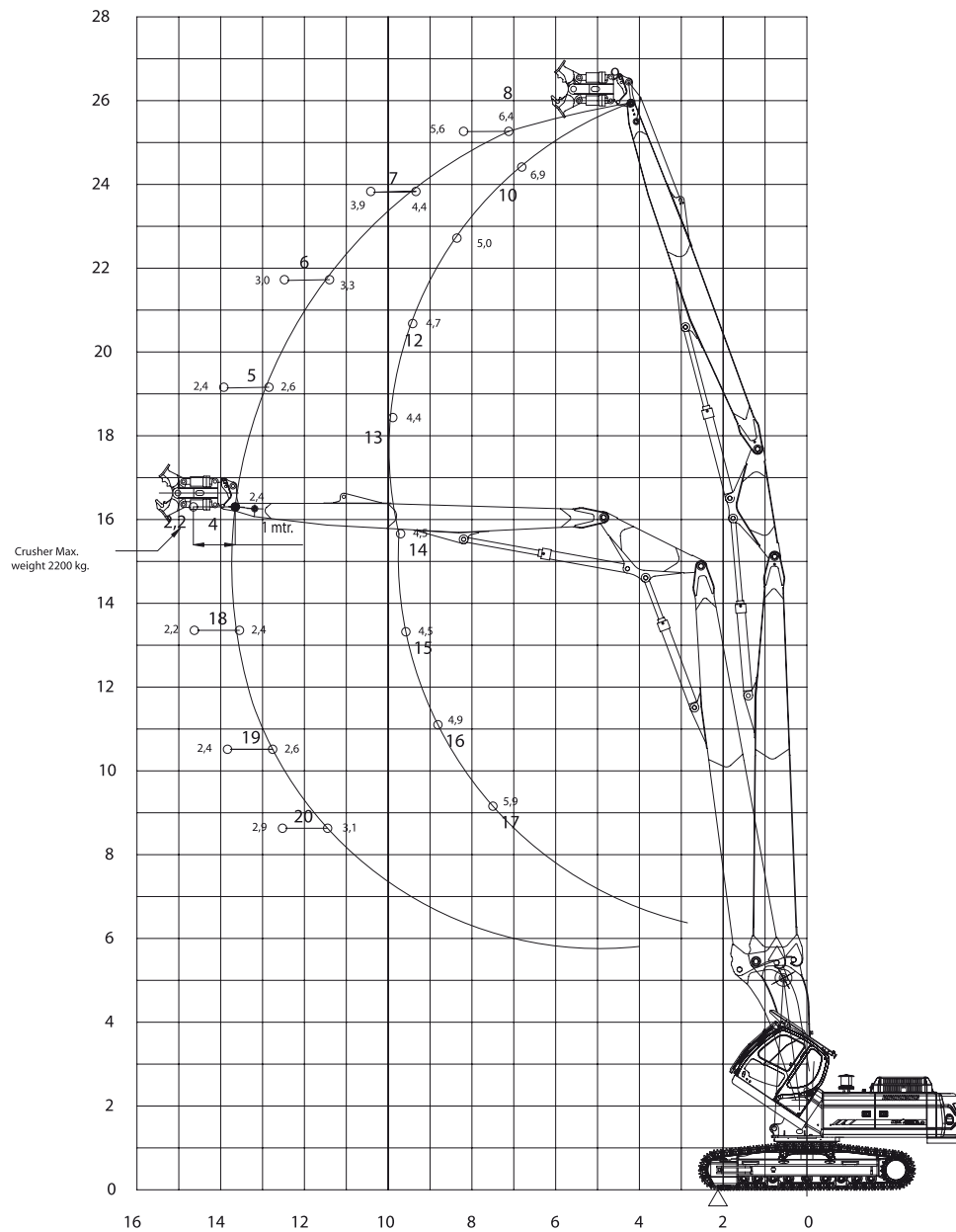
OPERATIONAL DATA



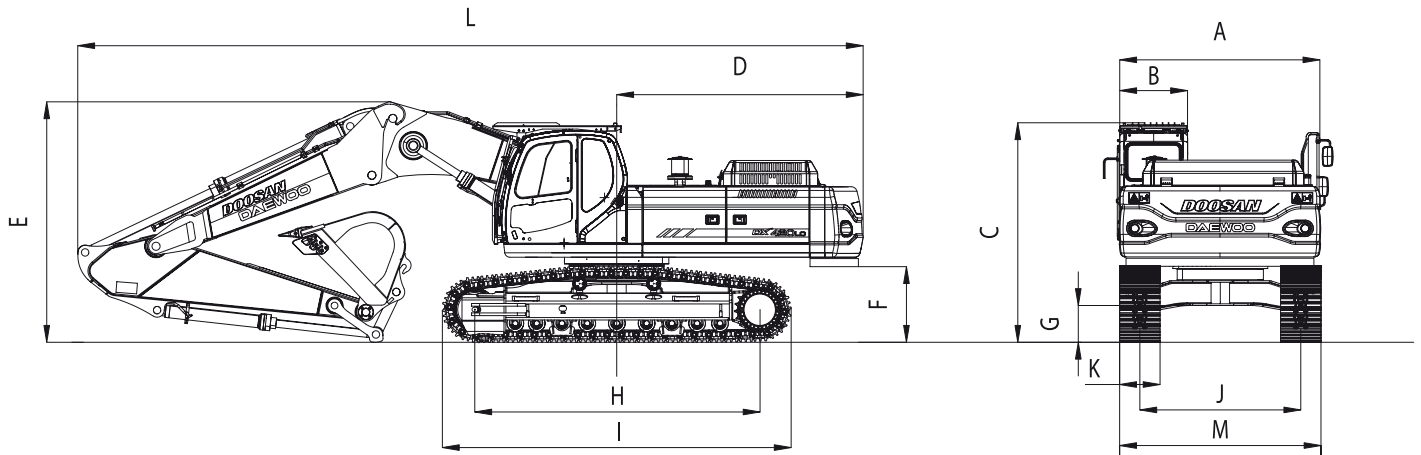
Standard configuration 3 pieces: Boom 12,99 m

DIMENSIONS		Standard Track	
Overall width of upper structure	A	mm	2.990
Overall width of cab.	B	mm	1.010
Overall height of cab.	C	mm	3.260
Tail swing radius	D	mm	3.660
Overall height of cab.	E	mm	3.260
Clearance under counterweight	F	mm	1.125
Ground clearance	G	mm	540
Tumbler distance	H	mm	4.250
Track length	I	mm	5.200
Track gauge	J	mm	2.390
Track shoe width	K	mm	600
Overall length	L	mm	17.200
Overall track width (for transportation)	M	mm	2.990
Overall track width (work)	M	mm	4.090
SPECIFICATIONS			
DOOSAN engine			DV11
Horsepower		kW/rpm	218/1.800

Front 3 pieces Working Capacity



OPERATIONAL DATA



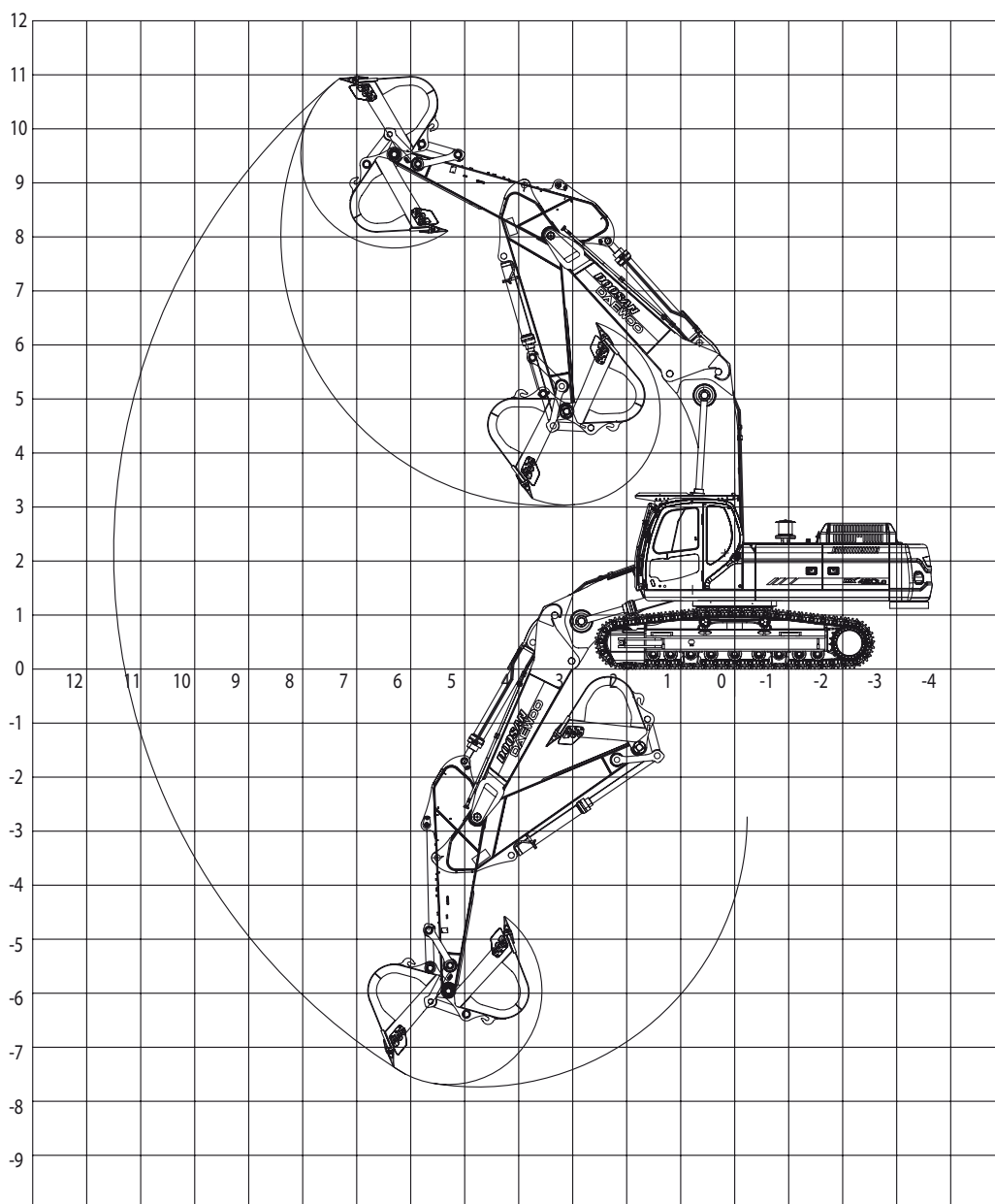
Optional configuration Digging Boom

DIMENSIONS	Standard Track		
Overall width of upper structure	A	mm	2.990
Overall width of cab.	B	mm	1.010
Overall height of cab.	C	mm	3.260
Tail swing radius	D	mm	3.660
Overall height	E	mm	3.600
Clearance under counterweight	F	mm	1.125
Ground clearance	G	mm	540
Tumbler distance	H	mm	4.250
Track length	I	mm	5.200
Track gauge	J	mm	2.390
Track shoe width	K	mm	600
Overall length	L	mm	11.670
Overall track width (for transportation)	M	mm	2.990
Overall track width (work)	M	mm	4.090
SPECIFICATIONS			
DOOSAN engine			DV11
Horsepower		kW/rpm	218/1.800

DIGGING FRONT WORKING CAPACITY

B (m)	2		3		4		5		6		7		8		9		Max. reach							
																					A(m)			
8																				*7,28	*7,28	7,81		
7												*7,69	*7,69	*7,63	7,62						*7,32	6,85	8,48	
6												*8,15	*8,15	*7,86	7,52						*7,48	6,10	8,99	
5										*9,63	*9,63	*8,83	*8,83	*8,27	7,38	*7,91	6,00				*7,74	5,59	9,36	
4			*23,59	*23,59	*16,23	*16,23	*12,85	*12,85	*10,90	*10,90	*9,66	8,97	*8,81	7,21	*8,22	5,89					*7,96	5,24	9,61	
3					*19,89	*19,89	*14,95	*14,69	*12,23	11,07	*10,53	8,70	*9,39	7,02	*8,58	5,78					8,13	5,02	9,76	
2					*17,09	*17,09	*16,75	14,11	*13,44	10,69	*11,36	8,44	*9,24	6,85	*8,94	5,66					7,99	4,91	9,79	
1					*14,73	*14,73	*17,99	13,70	*14,38	10,39	*12,03	8,23	*10,41	6,70	9,06	5,56					8,01	4,90	9,72	
0 (ground)			*8,19	*8,19	*15,98	*15,98	*18,60	13,45	*14,97	10,18	*12,49	8,07	*10,73	6,58	8,97	5,48					8,18	4,99	9,55	
-1	*8,94	*8,94	*11,95	*11,95	*18,85	*18,85	*18,67	13,33	*15,17	10,06	*12,68	7,97	10,71	6,51	8,92	5,43					8,54	5,20	9,26	
-2	*12,71	*12,71	*15,91	*15,91	*22,78	19,29	*18,26	13,31	*14,99	10,01	*12,56	7,92	10,68	6,48							9,15	3,57	8,85	
-3	*16,58	*16,58	*20,32	*20,32	*21,39	19,41	*17,38	13,37	*14,38	10,04	*12,05	7,94	*10,13	6,51							*9,58	6,17	8,30	
-4	*20,85	*20,85	*24,17	*24,17	*19,43	*19,43	*15,96	13,50	*13,25	10,14	*11,02	8,03									*9,83	7,16	7,57	
-5	*25,81	*25,81	*20,46	*20,46	*16,70	*16,70	*13,81	13,72	*11,38	10,32											*9,99	8,94	6,61	
-6			*15,34	*15,34	*12,77	*12,77	*10,45	*10,45														*9,80	*9,80	5,28

Digging Front Working Ranges





Infracore



DAEWOO becomes DOOSAN

On the 29th of April 2005, the DOOSAN group acquired DAEWOO Heavy Industries & Machinery.

By taking this action, DOOSAN – with estimated sales of € 9 billion in 2005 and a workforce of 23,000 – is firmly consolidating its position among the ever smaller number of heavy equipment manufacturers around the world.

The company, now a major player with regard to industrial and public-sector infrastructure projects, is looking decisively towards the future with its advanced technologies and its investments in research and development.

The group's strengths are built on over 100 years of experience, & a solid financial structure, allowing it to commit to large-scale investments for ensured future success.

DOOSAN Infracore intends to become a worldwide leader in offering total industrial solutions to its clients.

DOOSAN Infracore Europe S.A.

1^A, rue Achille Degrâce
7080 Frameries, Belgium
Tel : +32-65-61 32 30 • Fax : +32-65-67 73 38

DOOSAN Infracore France SA

1/3 rue Pavlov, Z.A. des Bruyères
78190 Trappes, France
Tel : +33-1-30 16 21 41 • Fax : +33-1-30 16 21 44

DOOSAN Infracore U.K., Ltd.

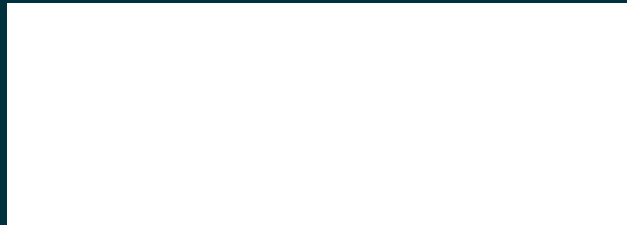
Doosan House, Unit 6, 3 Heol-Y-Gamlas, Parc Nantgarw,
Nantgarw, Cardiff CF15 7QU, U.K.
Tel : +44-1443-84-2273 • Fax : +44-1443-84-1933

DOOSAN Infracore Germany GmbH

Hans-Böckler-Str. 29
D-40764, Langenfeld-Fuhrkamp, Germany
Tel : +49-2173-8509-18 • Fax : +49-2173-8509-45

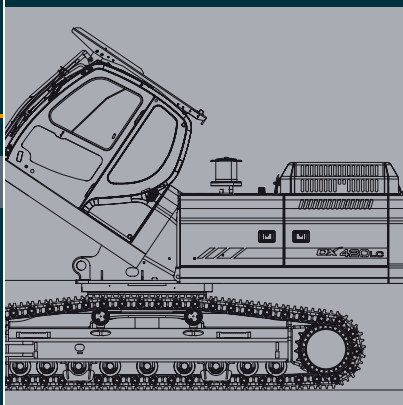
Head Office

Doosan Tower 26th FL. 18-12, Euljiro-6Ga,
Jung-Gu, Seoul, Korea 100-730
Tel : +82-2-3389-8114 • Fax : +82-2-3389-8117



www.doosaninfracore.com

www.doosaneurope.com



The illustrations do not necessary show the product in standard version.
All products and equipments are not available in all markets.
Materials and specifications are subjects to change without prior notice.

DX420LC Demo_UK_02/06 • Design by SizeCommunication.com