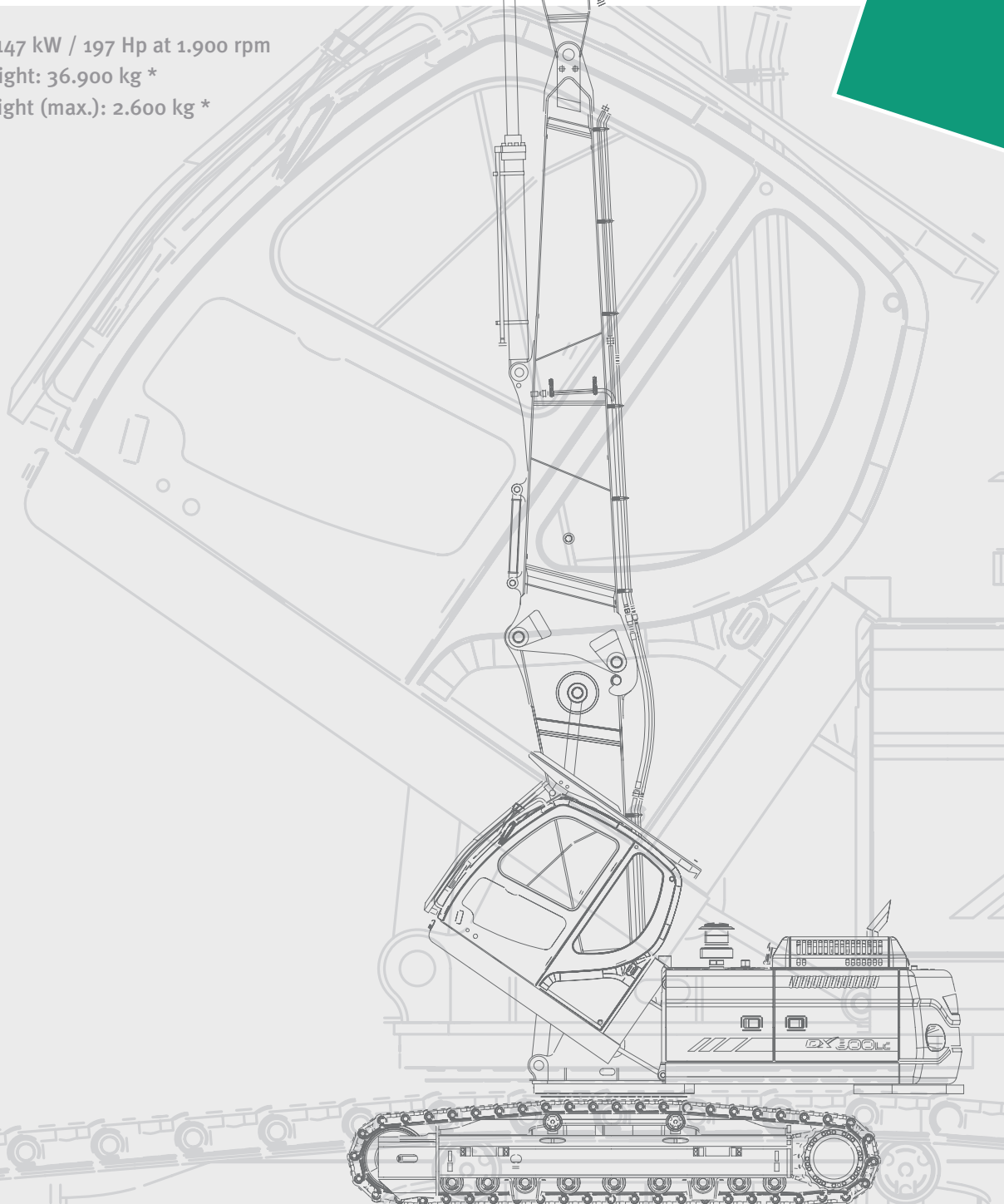


DX300LC Demolition

Engine power: 147 kW / 197 Hp at 1.900 rpm

Operational weight: 36.900 kg *

Attachment Weight (max.): 2.600 kg *



* For log loader track

Technical specifications

DX300LC

* Engine

• Model

Doosan DLo8
 “Common Rail” engine with direct fuel injection and electronic control, 4 valves per cylinder, vertical injectors, water cooled, turbo charged with air to air intercooler.
 The emission levels are well below the values required for Phase III.

• Number of cylinders

6

• Nominal flywheel power

147 kW (200 Ps) at 1.900 rpm (DIN 6271, net)
 147 kW (197 HP) at 1.900 rpm (SAE J1349, net)

• Max torque

93 kgf.m (911 Nm) at 1.300 rpm

• Piston displacement

7.640 cc

• Bore & stroke

108 mm x 139 mm

• Starter

24 V / 6 kW

• Batteries

2 x 12 V / 150 Ah

• Air cleaner

Double element and pre-filtered Turbo with auto dust evacuation.

* Environment

Noise levels comply with environmental regulations (dynamic values).

• Sound level guarantee

104 dB(A) (2000/14/EC)

• Cab sound level

73 dB(A) (6396/14/EC)

* Hydraulic system

The heart of the system is the e-EPOS (Electronic Power Optimizing System). It allows the efficiency of the system to be optimized for all working conditions and minimizes fuel consumption.

The new e-EPOS is connected to the engine electronic control via a data transfer link to harmonize the operation of the engine and hydraulics.

- The hydraulic system enables independent or combined operations.
- Two travel speeds offer either increased torque or high speed tracking.
- Cross-sensing pump system for fuel savings.
- Auto deceleration system.
- Two operating modes, two power modes.
- Button control of flow in auxiliary equipment circuits.
- Computer-aided pump power control.

• Main pumps

2 variable displacement axial piston pumps
 Max flow: 2 x 231,7 l/min

• Pilot pump

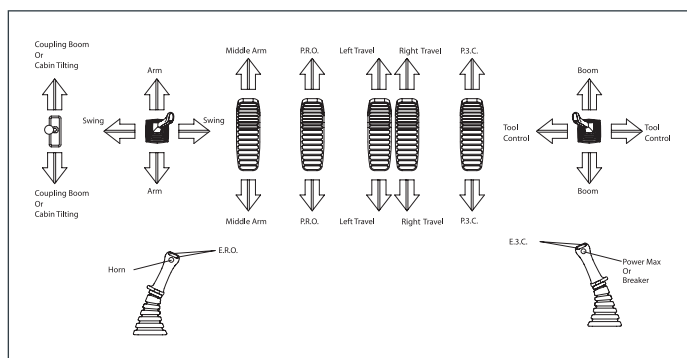
Gear pump – max flow: 27,4 l/min

• Main relief valves

Boom/arm/bucket:
 - Normal mode: 330 kg/cm² (324 bar)
 - Power mode: 350 kg/cm² (343 bar)
 Travel: 330 kg/cm² (324 bar)
 Rotation: 275 kg/cm² (270 bar)

* Controls

When lower boom to park or transport, you must use security release switch because the system can not allow to lower boom for safety.



Standard equipment

* Standard equipment

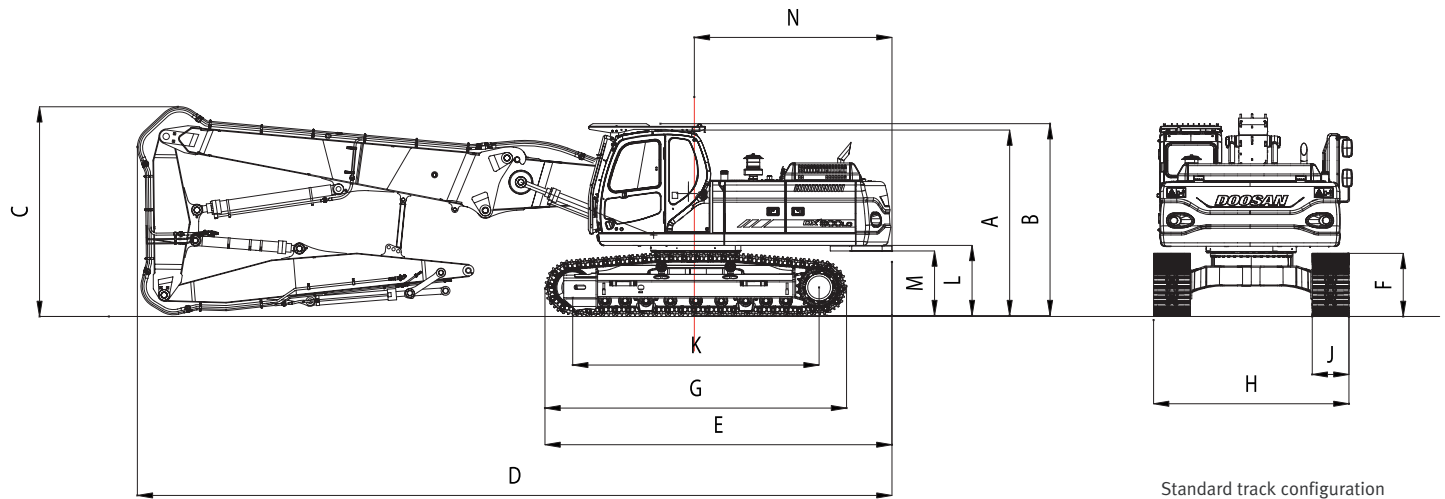
• Hydraulic system

- Boom and arm flow regeneration
- Boom and arm holding valves
- Swing anti-rebound valves
- Spare ports (valve)
- One-touch power boost
- Piping for hammer (one way)
- Piping for crusher
- Piping for rotating

• Cab & interior

- Cab mounted on viscous supports
- Air conditioning
- Adjustable suspension seat with head rest and adjustable arm rests
- Sliding front window removable in two parts
- Room light
- Intermittent windshield wiper
- Cigarette lighter and ashtray
- Cup holder
- Hot and cool box
- Colour monitor display
- Fuel control dial
- Remote radio ON/OFF switch on console
- Loudspeakers and connections for radio
- 12 V power outlet
- PC interface port for diagnostics
- Hydraulic control levers with 3 switches
- Sun visor
- Sunroof

Operational data



Standard track configuration

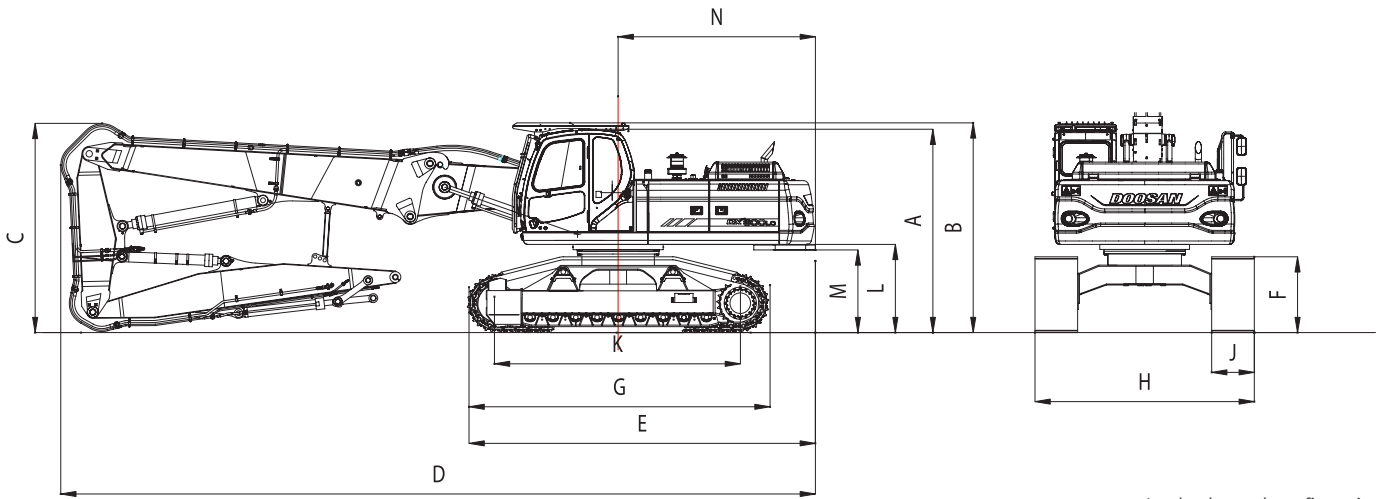
Standard configuration 3 pieces: Boom 5,58 m

* Dimensions

Track Type		Log Loader	Standard LC	Narrow LC	
A	Overall height of cab (without canopy)	mm	3.337	3.065	3.065
B	Overall height of cab (with canopy)	mm	3.417	3.145	3.145
C	Overall height of front	mm	3.440	3.440	3.440
D	Overall length	mm	12.400	12.400	12.400
E	Overall length (without front)	mm	5.700	5.700	5.700
F	Track height	mm	1.244	1.044	1.044
G	Track overall length	mm	4.950	4.950	4.950
H	Track overall width	mm	3.600	3.200	3.000
J	Track shoe width	mm	700	600	600
K	Tumbler distance	mm	4.010	4.010	4.010
L	Upper structure ground clearance	mm	1.447	1.175	1.175
M	Upper structure ground clearance with add counter height	mm	1.332	1.060	1.060
N	Tail swing radius	mm	3.240	3.240	3.240

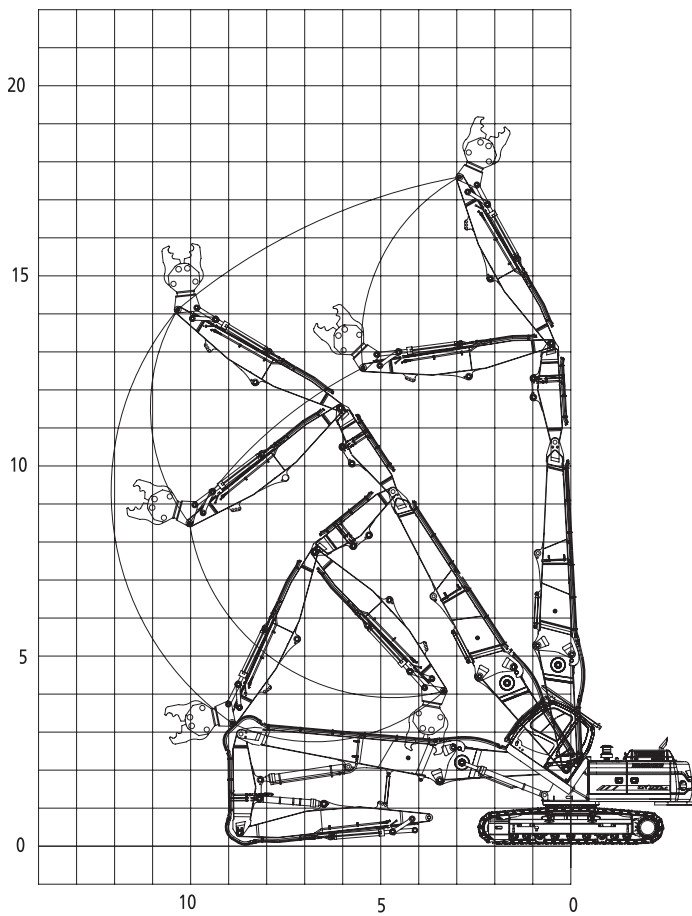
* Specifications

Track Type		Log Loader	Standard LC	Narrow LC
Operating weight (without tool)	kg	36.650	34.650	34.530
Maximum reach at ground level (pin arm)	mm	12.085	12.085	12.085
Maximum height (pin arm)	mm	17.877	17.600	17.600
Working capacity	kg	2.600	2.200	2.000
DOOSAN engine		DLo8	DLo8	DLo8
Working angle limiter	°	30	30	30
Horsepower	kW/rpm	147/1.900	147/1.900	147/1.900

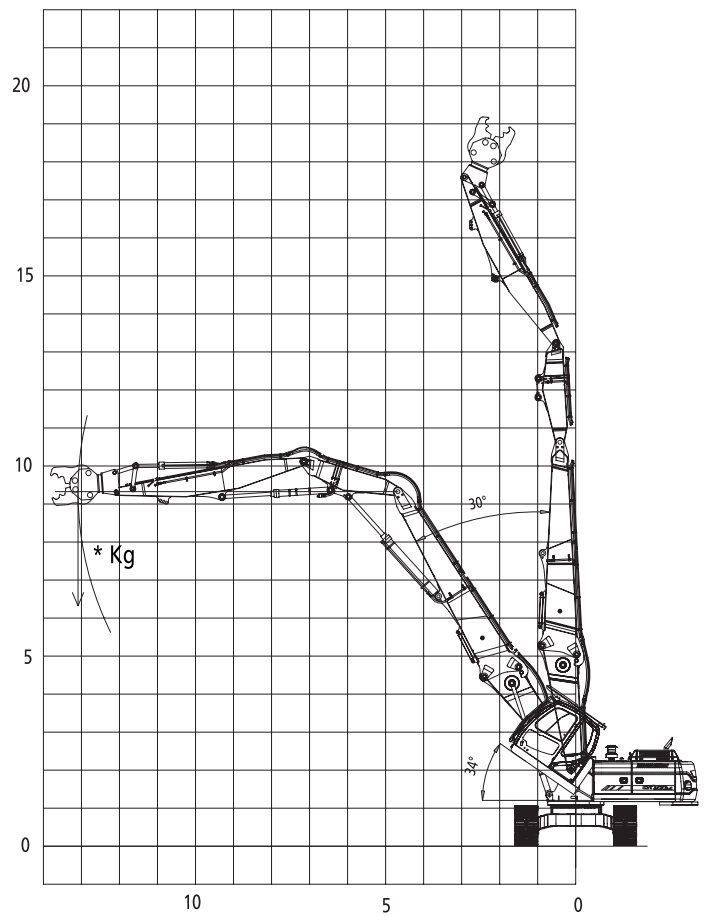


Log loader track configuration

Front 3 pieces Working Ranges

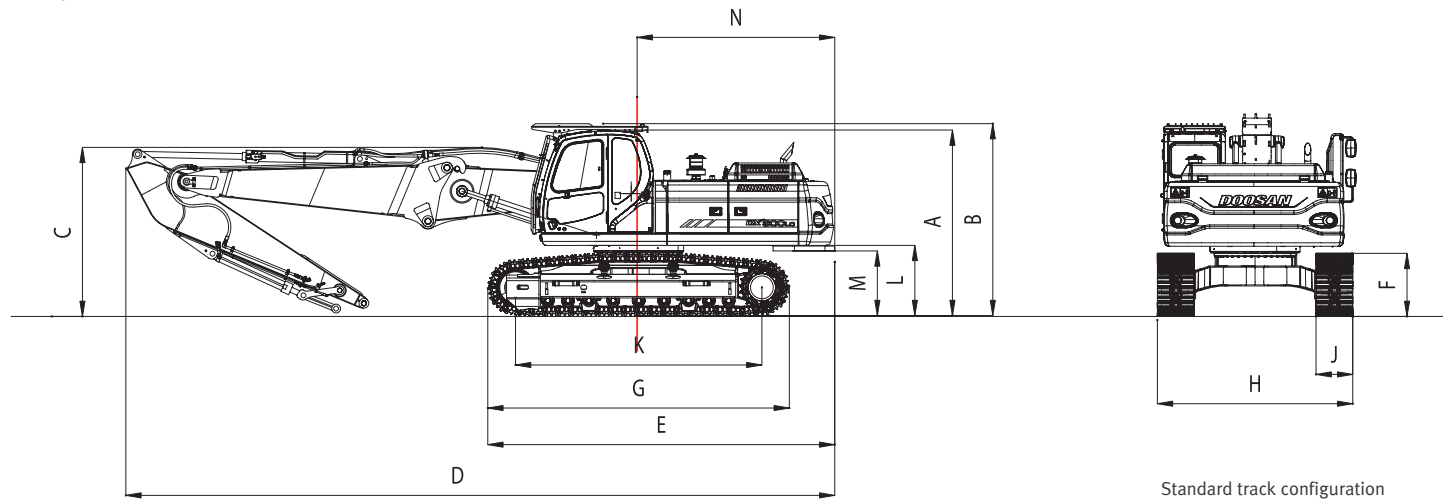


Front 3 pieces Working Capacity



* see specification sheet

Operational data



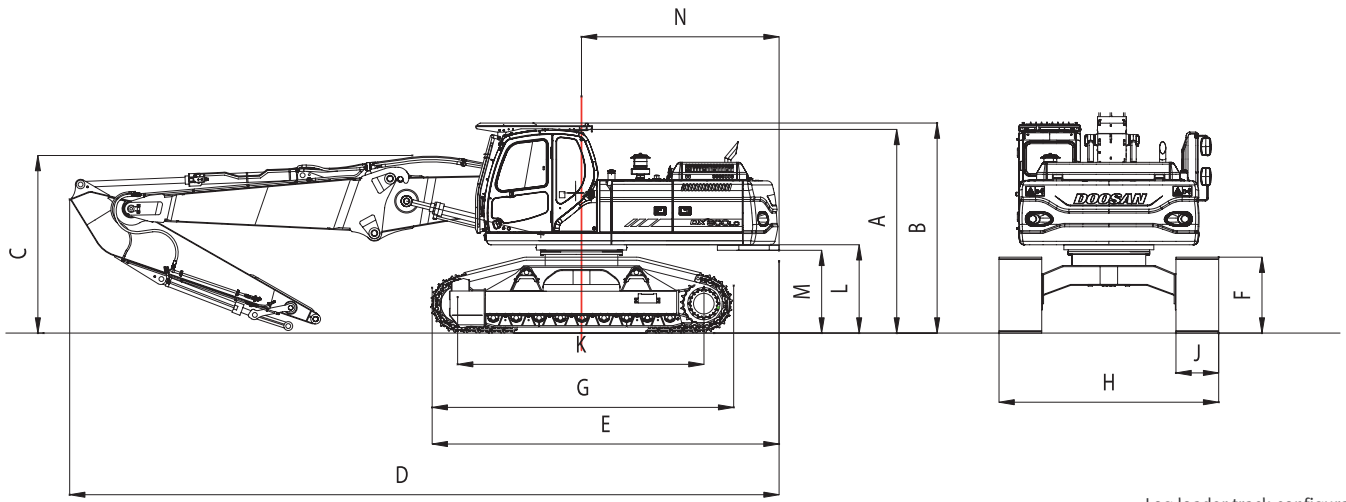
Optional configuration 2 pieces: Boom 4,25 m

* Dimensions

Track Type		Log Loader	Standard LC	Narrow LC	
A	Overall height of cab (without canopy)	mm	3.337	3.065	3.065
B	Overall height of cab (with canopy)	mm	3.417	3.145	3.145
C	Overall height of front	mm	2.490	2.745	2.745
D	Overall length	mm	11.625	11.625	11.625
E	Overall length (without front)	mm	5.700	5.700	5.700
F	Track height	mm	1.244	1.044	1.044
G	Track overall length	mm	4.950	4.950	4.950
H	Track overall width	mm	3.600	3.200	3.000
J	Track shoe width	mm	700	600	600
K	Tumbler distance	mm	4.010	4.010	4.010
L	Upper structure ground clearance	mm	1.447	1.175	1.175
M	Upper structure ground clearance with add counter height	mm	1.332	1.060	1.060
N	Tail swing radius	mm	3.240	3.240	3.240

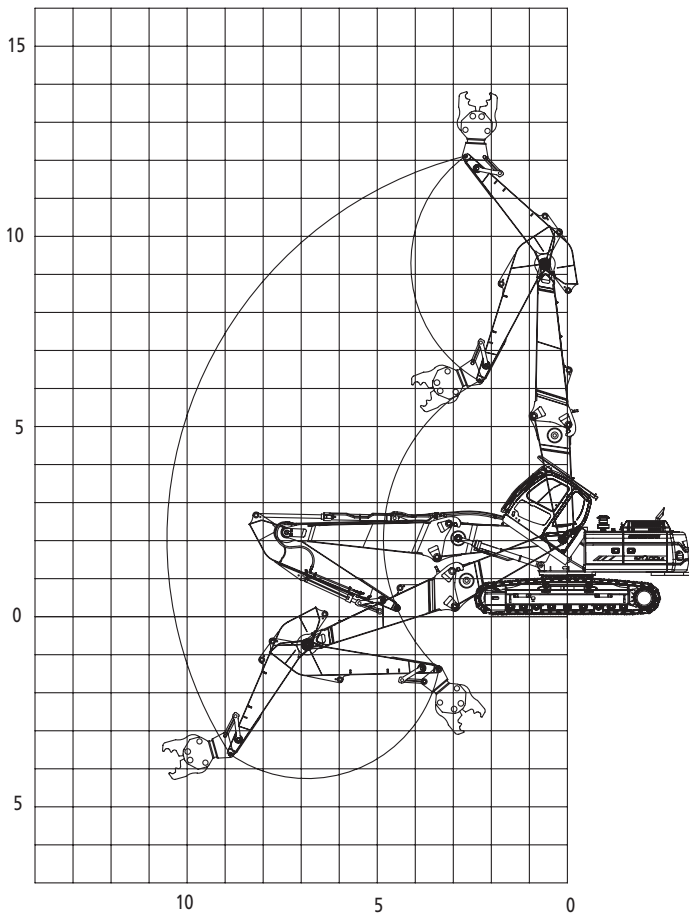
* Specifications

Track Type		Log Loader	Standard LC	Narrow LC
Operating weight (without tool)	kg	35.400	33.400	33.280
Maximum reach at ground level (pin arm)	mm	10.526	10.526	10.526
Maximum height (pin arm)	mm	12.390	12.113	12.113
Working capacity	kg	4.000	4.000	3.500
DOOSAN engine		DLo8	DLo8	DLo8
Horsepower	kW/rpm	147/1.900	147/1.900	147/1.900

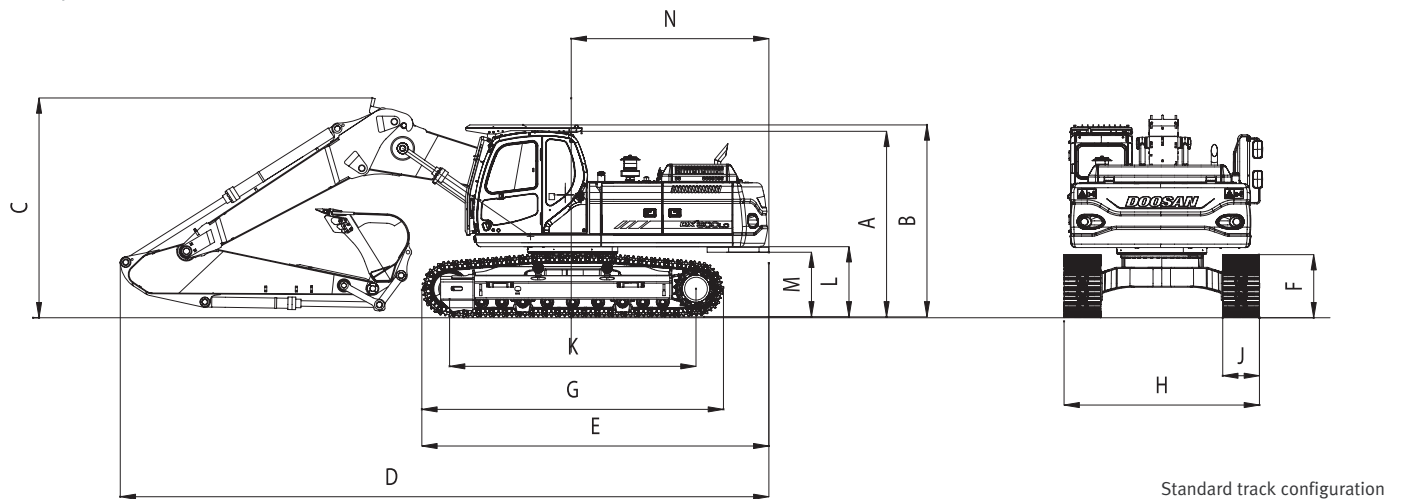


Log loader track configuration

Front 2 pieces Working Ranges



Operational data



Standard track configuration

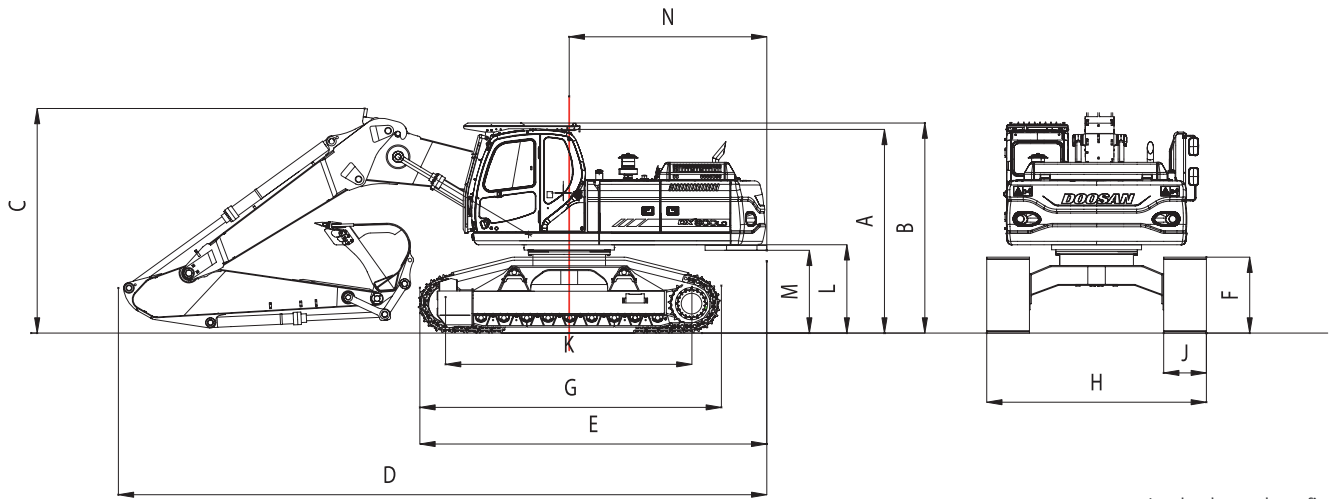
Optional configuration Digging Boom

* Dimensions

Track Type		Log Loader	Standard LC	Narrow LC	
A	Overall height of cab (without canopy)	mm	3.337	3.065	3.065
B	Overall height of cab (with canopy)	mm	3.417	3.145	3.145
C	Overall height of front	mm	3.630	3.600	3.600
D	Overall length	mm	10.630	10.630	10.630
E	Overall length (without front)	mm	5.700	5.700	5.700
F	Track height	mm	1.244	1.044	1.044
G	Track overall length	mm	4.950	4.950	4.950
H	Track overall width	mm	3.600	3.200	3.000
J	Track shoe width	mm	700	600	600
K	Tumbler distance	mm	4.010	4.010	4.010
L	Upper structure ground clearance	mm	1.447	1.175	1.175
M	Upper structure ground clearance with add counter height	mm	1.332	1.060	1.060
N	Tail swing radius	mm	3.240	3.240	3.240

* Specifications

Track Type		Log Loader	Standard LC	Narrow LC	
	Operating weight (without tool)	kg	35.100	33.100	32.980
	Maximum reach at ground level (pin arm)	mm	10.654	10.654	10.654
	Maximum height (pin arm)	mm	10.415	10.138	10.138
	Working capacity	kg	4.000	4.000	3.500
	DOOSAN engine		DLo8	DLo8	DLo8
	Horsepower	kW/rpm	147/1.900	147/1.900	147/1.900

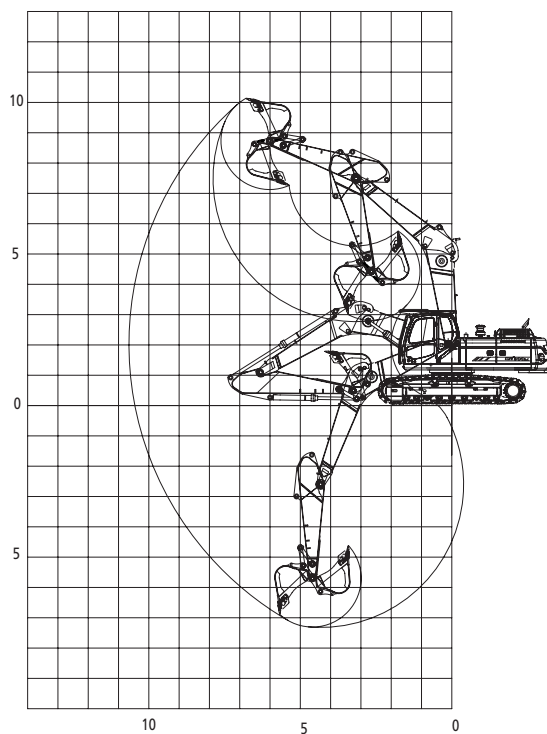


Log loader track configuration

Digging Front Working Ranges

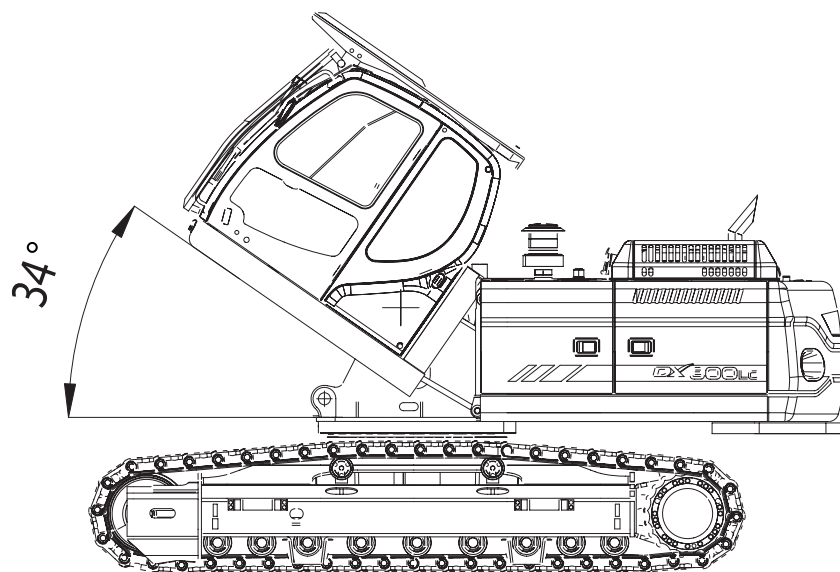
Digging Front Working Capacity

B (m)	A (m)		2		3		4		5		6		7		8		9		Max. reach		A(m)	
	☐	☐	☐	☐	☐	☐	☐	☐	☐	☐	☐	☐	☐	☐	☐	☐	☐	☐	☐	☐		
8														*4,58	*4,58					*4,28	*4,28	7,10
7														*5,11	*5,11					*4,25	*4,25	7,85
6														*5,32	*5,32	*5,38	4,84			*4,30	*4,30	8,41
5											*5,99	*5,99	*5,74	*5,74	*5,59	4,78				*4,41	3,99	8,82
4									*7,76	*7,76	*6,86	*6,86	*6,30	5,86	*5,94	4,68	*5,10	3,80		*4,59	3,72	9,10
3			*10,78	*10,78	*11,93	*11,93	*9,30	*9,30	*7,85	7,27	*6,95	5,69	*6,37	4,58	5,98	3,74			*4,84	3,54	9,27	
2			*4,70	*4,70	*14,32	13,10	*10,78	9,27	*8,82	7,02	*7,61	5,53	*6,81	4,47	5,90	3,67			*5,18	3,45	9,32	
1			*5,08	*5,08	*14,88	12,64	*11,98	8,95	*9,67	6,80	*8,21	5,38	7,05	4,37	5,84	3,61			5,57	3,44	9,27	
0 (ground)			*7,00	*7,00	*14,39	12,40	*12,80	8,74	*10,32	6,64	8,60	5,27	6,96	4,29	5,79	3,56			5,68	3,50	9,10	
-1	*6,57	*6,57	*9,46	*9,46	*16,01	12,31	*13,23	8,63	*10,72	6,54	8,51	5,19	6,91	4,24					5,94	3,65	8,82	
-2	*9,33	*9,33	*12,34	*12,34	*16,87	12,31	*13,29	8,59	*10,84	6,50	8,48	5,16	6,89	4,22					6,39	3,93	8,41	
-3	*12,28	*12,28	*15,76	*15,76	*16,27	12,38	*12,98	8,62	*10,65	6,51	8,49	5,17							7,13	4,38	7,84	
-4	*15,65	*15,65	*19,54	*19,54	*15,19	12,52	*12,23	8,71	*10,04	6,58	*8,24	5,25							*8,08	5,15	7,09	
-5	*19,75	*19,75	*17,08	*17,08	*13,45	12,74	*10,85	8,87	*8,72	6,73									*8,54	6,59	6,09	
-6					*10,56	*10,56														*8,98	*8,98	4,66

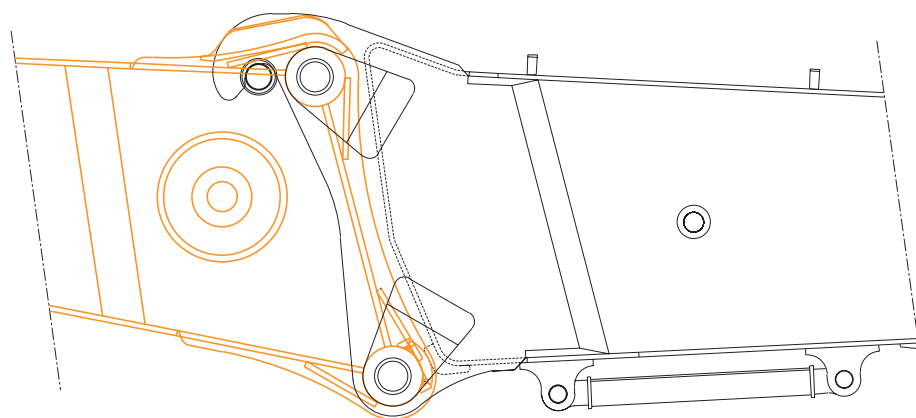


Special Features

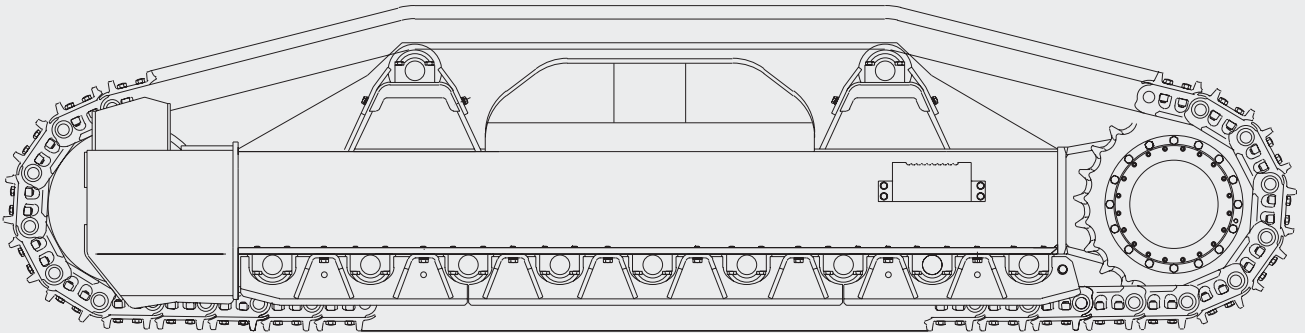
Tilting cabin activated by 2 cylinders for better stability of Cabin and easier visibility of tools.



Easy and fast coupling between Boom and Extension Boom by hydraulic system "Pins and Hooks". This system guides the two parts at the time of coupling.

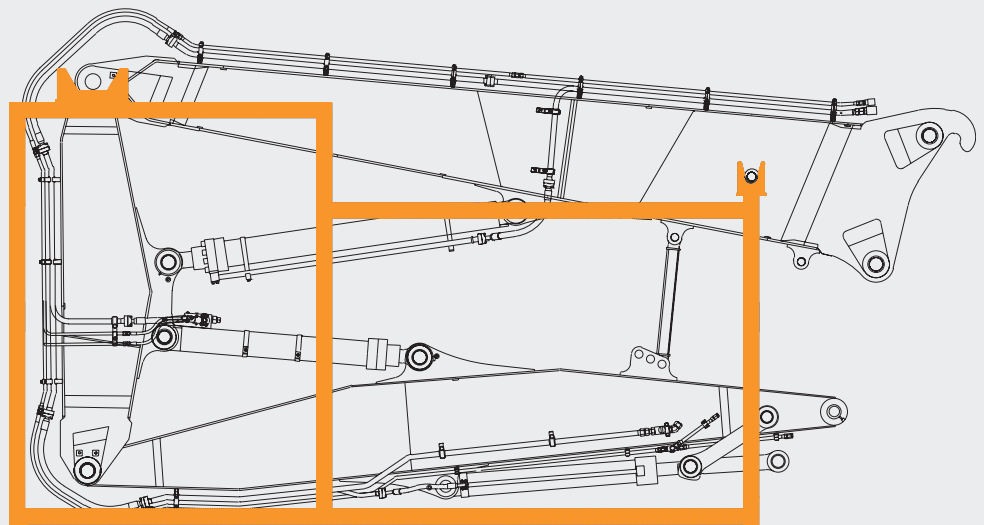


Shoe Guard: Link Protection
and Prevention of Derailment.
Only for log Loader Track.



Supports for the three front configurations:

- Front 2 pieces
- Front 3 pieces
- Digging Front



DOOSAN Infracore Europe S.A.

1^à, rue Achille Degrâce
7080 Frameries, Belgium
Tel : +32-65-61 32 30 • Fax : +32-65-67 73 38

DOOSAN Infracore France SA

ZAC la clé St Pierre, Buroplus 2
Avenue Jean d'Alembert, 1^à
78990 Elancourt, France
Tel : +33-1-30 16 21 41 • Fax : +33-1-30 16 21 44

DOOSAN Infracore U.K., Ltd.

Doosan House, Unit 6, 3 Heol-Y-Gamlas, Parc Nantgarw,
Nantgarw, Cardiff CF15 7QU, U.K.
Tel : +44-1443-84-2273 • Fax : +44-1443-84-1933

DOOSAN Infracore Europe S.A. Germany

Heinrich-von-Stephan-Str. 2
D-40764, Langenfeld, Germany
Tel : +49-2173-2035212 • Fax : +49-2173-2035219

Head Office

Doosan Tower 26th FL. 18-12, Euljiro-6Ga,
Jung-Gu, Seoul, Korea 100-730
Tel : +82-2-3389-8114 • Fax : +82-2-3389-8117

www.doosaninfracore.com

www.doosaneurope.com

