

DX300-340-420LC Demolition

DX300LC Demolition

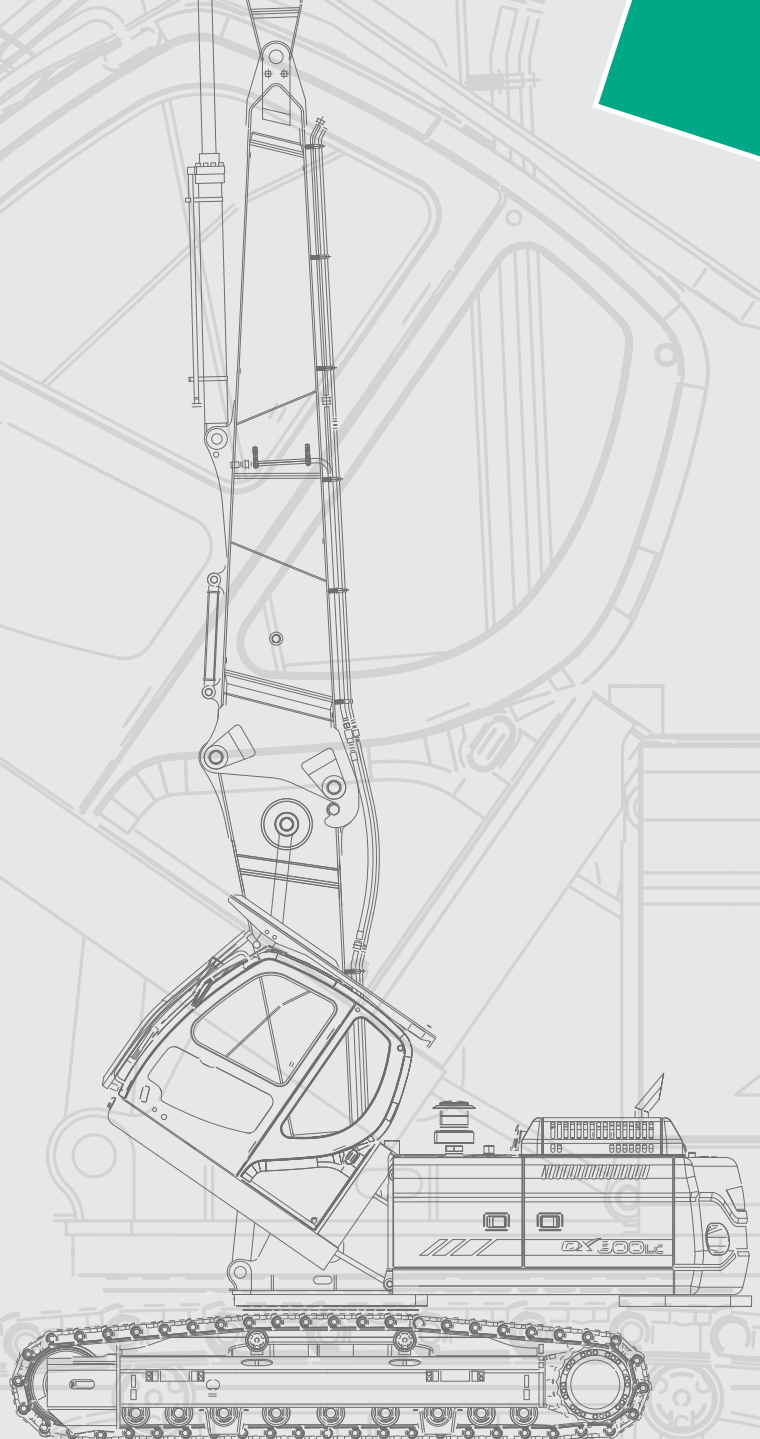
Engine power: 147 kW / 197 Hp at 1.900 rpm
Operational weight: 36.900 kg *
Attachment Weight (max.): Standard: 2.200 kg *
Narrow: 2.000kg *

DX340LC Demolition

Engine power: 184 kW / 247 Hp at 1.750 rpm
Operational weight: 44.000 kg
Attachment Weight (max.): 2.200 kg *

DX420LC Demolition

Engine power: 218 kW / 293 Hp at 1.800 rpm
Operational weight: 51.500 kg *
Attachment Weight (max.): 2.200 kg *



* For log loader track

Technical specifications

DX300LC

DX340LC

DX420LC

* Engine

• Model

DX300 - DX340: Doosan DLo8
 DX420: Doosan DV11
 "Common Rail" engine with direct fuel injection and electronic control, 4 valves per cylinder, vertical injectors, water cooled, turbo charged with air to air intercooler.
 The emission levels are well below the values required for Phase III.

• Number of cylinders

6

• Nominal flywheel power

DX300: 147 kW / 197 Hp (200 Ps) at 1.900 rpm
 DX340: 184 kW / 247 Hp (250 Ps) at 1.750 rpm
 DX420: 218 kW / 293 Hp (297 Ps) at 1.800 rpm

• Max torque

DX300: 93 kgf.m (911 Nm) at 1.300 rpm
 DX340: 117 kgf.m (1.147 Nm) at 1.300 rpm
 DX420: 140 kgf.m (1.373 Nm) at 1.300 rpm

• Piston displacement

DX300 - DX340: 7.640 cm³
 DX420: 10.964 cm³

• Bore & stroke

DX300 - DX340: 108 mm x 139 mm
 DX420: 128 mm x 142 mm

• Starter

DX300 - DX340: 24 V / 6 kW
 DX420: 24 V / 7 kW

• Batteries

2 x 12 V / 150 Ah

• Air cleaner

Double element and pre-filtered Turbo with auto dust evacuation.

* Environment

Noise levels comply with environmental regulations (dynamic values).

• Sound level guarantee

104 dB(A) (2000/14/EC)

• Cab sound level

73 dB(A) (6396/14/EC)

* Hydraulic system

The heart of the system is the e-EPOS (Electronic Power Optimizing System). It allows the efficiency of the system to be optimized for all working conditions and minimizes fuel consumption.

The new e-EPOS is connected to the engine electronic control via a data transfer link to harmonize the operation of the engine and hydraulics.

- The hydraulic system enables independent or combined operations.
- Two travel speeds offer either increased torque or high speed tracking.
- Cross-sensing pump system for fuel savings.
- Auto deceleration system.
- Two operating modes, two power modes.
- Button control of flow in auxiliary equipment circuits.
- Computer-aided pump power control.

• Main pumps

2 variable displacement axial piston pumps - max flow:
 DX300: 2 x 231,7 l/min
 DX340: 2 x 265 l/min
 DX420: 2 x 315 l/min

• Pilot pump

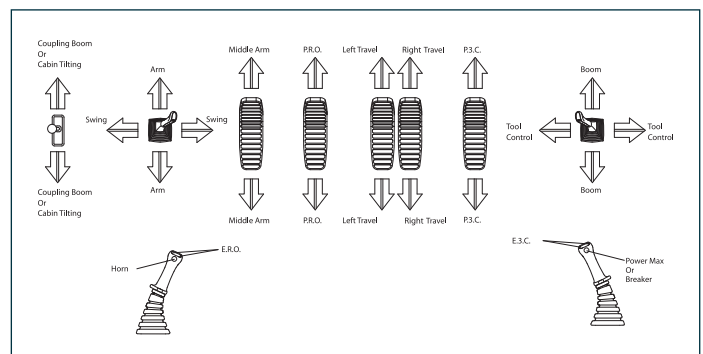
Gear pump – Max flow: 27,4 l/min

• Main relief valves

	DX300 - DX340	DX420
Boom/arm/bucket:		
- Normal mode:	330 kg/cm ² (324 bar)	320 kg/cm ² (314 bar)
- Power mode:	350 kg/cm ² (343 bar)	350 kg/cm ² (343 bar)
Travel:	330 kg/cm ² (324 bar)	320 kg/cm ² (314 bar)
Rotation:	275 kg/cm ² (270 bar)	270 kg/cm ² (265 bar)

* Controls

When lower boom to park or transport, you must use security release switch because the system can not allow to lower boom for safety.



Standard equipment

* Standard equipment

• Hydraulic system

- Boom and arm flow regeneration
- Boom and arm holding valves
- Swing anti-rebound valves
- Spare ports (valve)
- One-touch power boost
- Piping for hammer (one way)
- Piping for crusher
- Piping for rotating

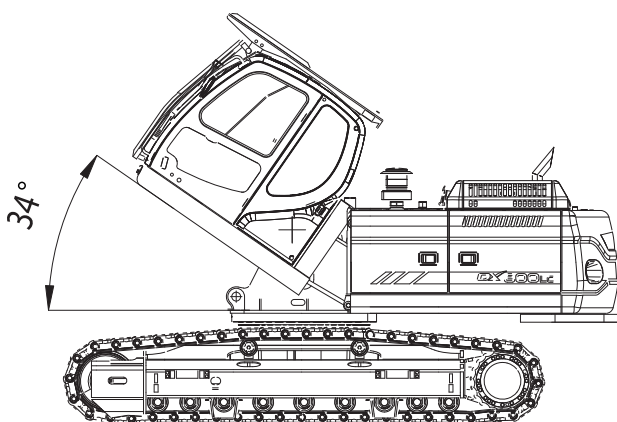
• Cab & interior

- Cab mounted on viscous supports
- Air conditioning
- Adjustable suspension seat with head rest and adjustable arm rests
- Sliding front window removable in two parts
- Room light

- Intermittent windshield wiper
- Cigarette lighter and ashtray
- Cup holder
- Hot and cool box
- Colour monitor display
- Fuel control dial
- Remote radio ON/OFF switch on console
- Loudspeakers and connections for radio
- 12 V power outlet
- PC interface port for diagnostics
- Hydraulic control levers with 3 switches
- Sun visor
- Sunroof

Special Features

Tilting cabin activated by 2 cylinders for better stability of cabin and easier visibility of tools.



Operational data - DX300LC Demolition

Standard configuration 3 pieces: Boom 5,58 m

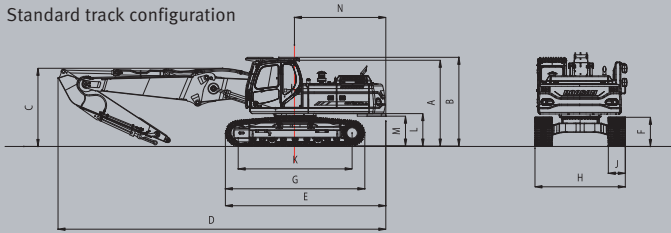
* Dimensions

Track Type		Log Loader	Standard LC	Narrow LC
A	Overall height of cab (without canopy) mm	3.337	3.065	3.065
B	Overall height of cab (with canopy) mm	3.417	3.145	3.145
C	Overall height of front mm	3.440	3.440	3.440
D	Overall length mm	12.400	12.400	12.400
E	Overall length (without front) mm	5.700	5.700	5.700
F	Track height mm	1.244	1.044	1.044
G	Track overall length mm	4.950	4.950	4.950
H	Track overall width mm	3.600	3.200	3.000
J	Track shoe width mm	700	600	600
K	Tumbler distance mm	4.010	4.010	4.010
L	Upper structure ground clearance mm	1.447	1.175	1.175
M	Upper structure ground clearance with add counter height mm	1.332	1.060	1.060
N	Tail swing radius mm	3.240	3.240	3.240

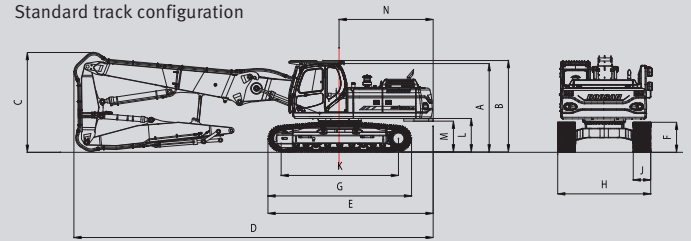
* Specifications

Operating weight (without tool)	kg	36.650	34.650	34.530
Maximum reach at ground level (pin arm)	mm	12.085	12.085	12.085
Maximum height (pin arm)	mm	17.877	17.600	17.600
Working capacity	kg	2.600	2.200	2.000
DOOSAN engine		DLo8	DLo8	DLo8
Working angle limiter	°	30	30	30
Horsepower	kW/rpm	147/1.900	147/1.900	147/1.900

Standard track configuration



Standard track configuration



Optional configuration 2 pieces: Boom 4,25 m

* Dimensions

Track Type		Log Loader	Standard LC	Narrow LC
A	Overall height of cab (without canopy) mm	3.337	3.065	3.065
B	Overall height of cab (with canopy) mm	3.417	3.145	3.145
C	Overall height of front mm	2.490	2.745	2.745
D	Overall length mm	11.625	11.625	11.625
E	Overall length (without front) mm	5.700	5.700	5.700
F	Track height mm	1.244	1.044	1.044
G	Track overall length mm	4.950	4.950	4.950
H	Track overall width mm	3.600	3.200	3.000
J	Track shoe width mm	700	600	600
K	Tumbler distance mm	4.010	4.010	4.010
L	Upper structure ground clearance mm	1.447	1.175	1.175
M	Upper structure ground clearance with add counter height mm	1.332	1.060	1.060
N	Tail swing radius mm	3.240	3.240	3.240

* Specifications

Operating weight (without tool)	kg	35.400	33.400	33.280
Maximum reach at ground level (pin arm)	mm	10.526	10.526	10.526
Maximum height (pin arm)	mm	12.390	12.113	12.113
Working capacity	kg	4.000	4.000	3.500
DOOSAN engine		DLo8	DLo8	DLo8
Horsepower	kW/rpm	147/1.900	147/1.900	147/1.900

Optional configuration Digging Boom

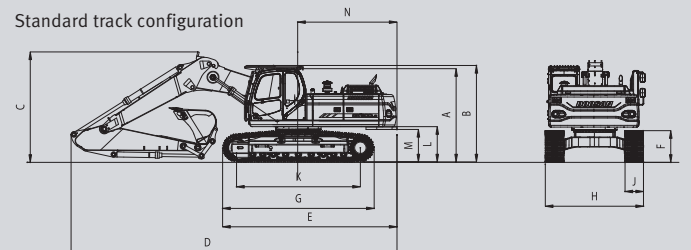
* Dimensions

Track Type		Log Loader	Standard LC	Narrow LC
A	Overall height of cab (without canopy) mm	3.337	3.065	3.065
B	Overall height of cab (with canopy) mm	3.417	3.145	3.145
C	Overall height of front mm	3.630	3.600	3.600
D	Overall length mm	10.630	10.630	10.630
E	Overall length (without front) mm	5.700	5.700	5.700
F	Track height mm	1.244	1.044	1.044
G	Track overall length mm	4.950	4.950	4.950
H	Track overall width mm	3.600	3.200	3.000
J	Track shoe width mm	700	600	600
K	Tumbler distance mm	4.010	4.010	4.010
L	Upper structure ground clearance mm	1.447	1.175	1.175
M	Upper structure ground clearance with add counter height mm	1.332	1.060	1.060
N	Tail swing radius mm	3.240	3.240	3.240

* Specifications

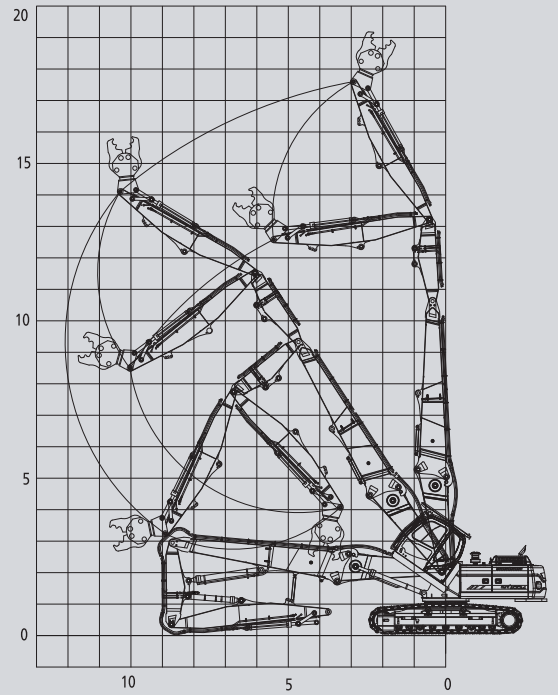
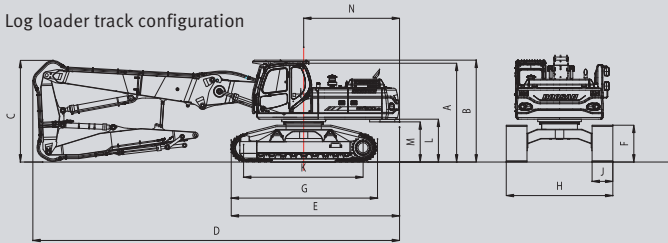
Operating weight (without tool)	kg	35.100	33.100	32.980
Maximum reach at ground level (pin arm)	mm	10.654	10.654	10.654
Maximum height (pin arm)	mm	10.415	10.138	10.138
Working capacity	kg	4.000	4.000	3.500
DOOSAN engine		DLo8	DLo8	DLo8
Horsepower	kW/rpm	147/1.900	147/1.900	147/1.900

Standard track configuration

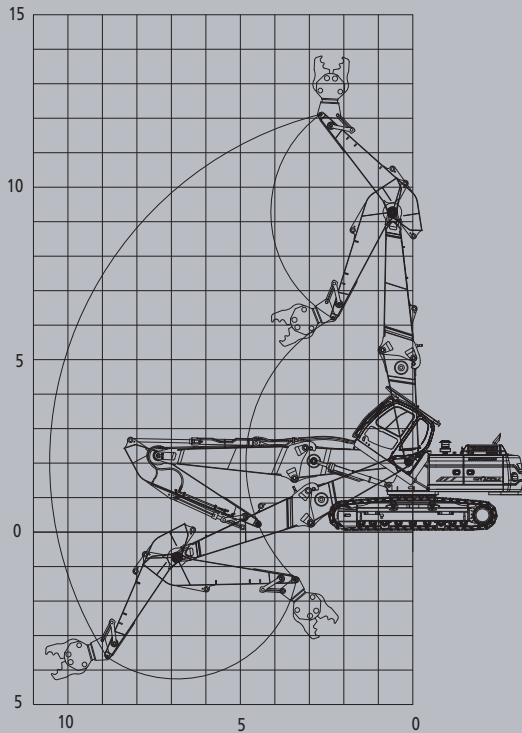


Front 3 pieces Working Ranges

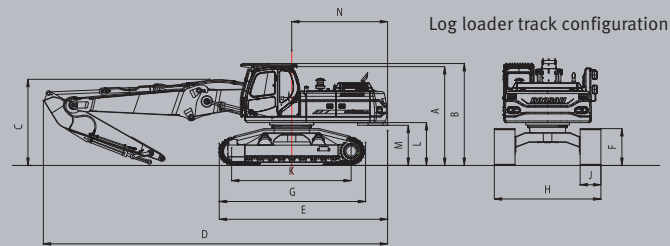
Log loader track configuration



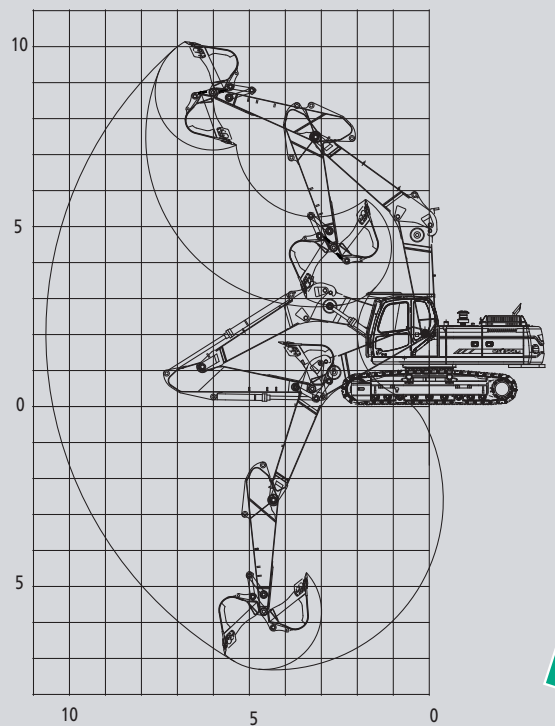
Front 2 pieces Working Ranges



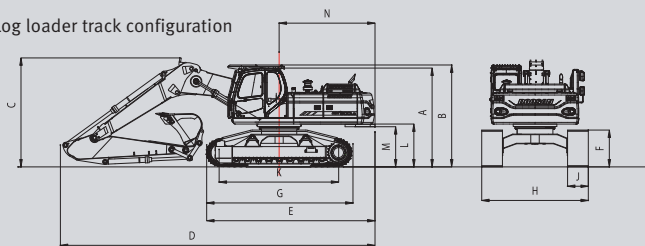
Log loader track configuration



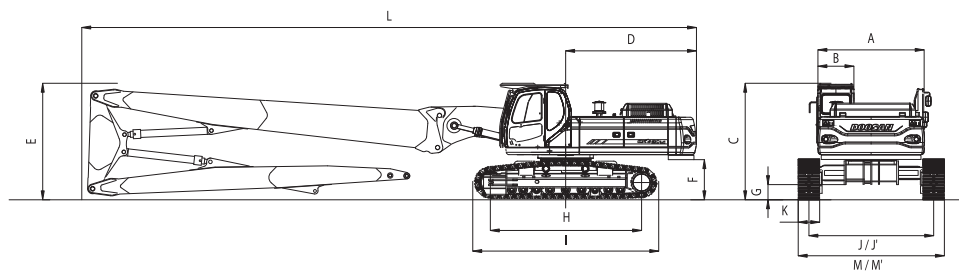
Digging Front Working Ranges



Log loader track configuration



Operational data - DX340LC Demolition



DX340LC

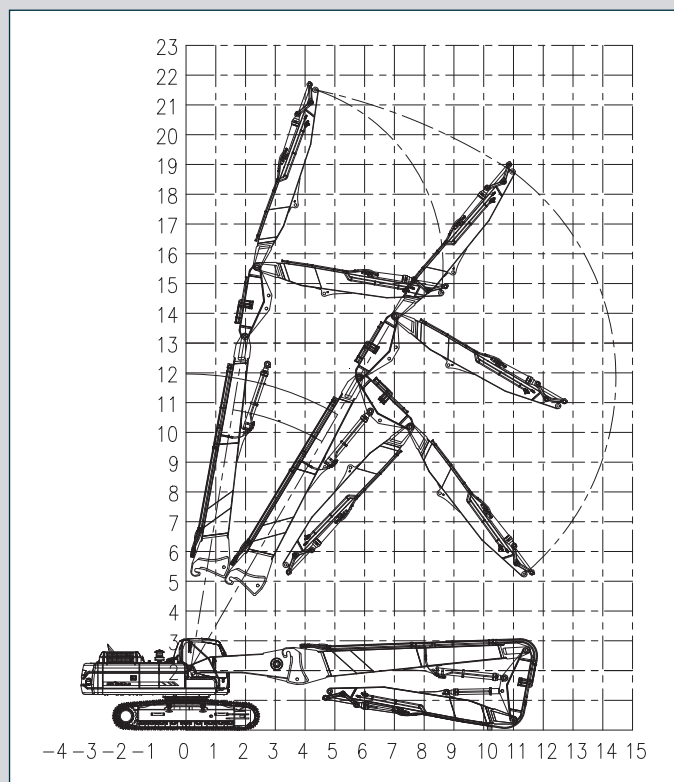
Standard configuration 3 pieces: Boom ??? m

* Dimensions

Standard Track			
A	Overall width of upper structure	mm	2.990
B	Overall width of cab.	mm	1.010
C	Overall height of cab.	mm	3.100
D	Tail swing radius	mm	3.500
E	Overall height of cab.	mm	3.085
F	Clearance under counterweight	mm	1.060
G	Ground clearance	mm	395
H	Tumbler distance	mm	4.050
I	Track length	mm	4.940
J	Track gauge (for transportation)	mm	2.390
J'	Track gauge (working mode)	mm	3.490
K	Track shoe width	mm	600
L	Overall length	mm	15.350
M	Overall track width (for transportation)	mm	2.990
M'	Overall track width (working mode)	mm	4.090

* Specifications

DOOSAN engine		DLo8
Horsepower	kW/rpm	184/1.750



Operational data - DX420LC Demolition

DX420LC

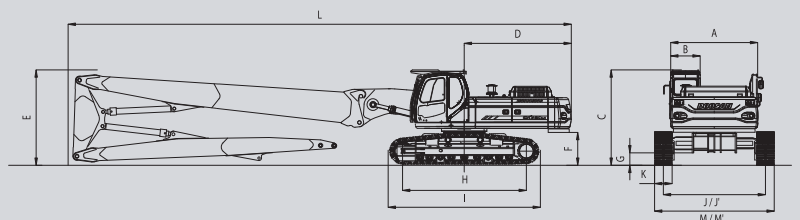
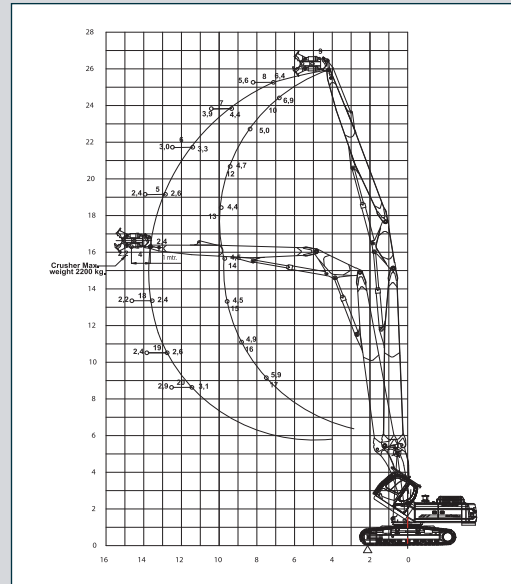
Standard configuration 3 pieces: Boom 12.99 m

* Dimensions

Standard Track		
A	Overall width of upper structure	mm 2.990
B	Overall width of cab.	mm 1.010
C	Overall height of cab.	mm 3.260
D	Tail swing radius	mm 3.660
E	Overall height of cab.	mm 3.260
F	Clearance under counterweight	mm 1.125
G	Ground clearance	mm 420
H	Tumbler distance	mm 4.250
I	Track length	mm 5.200
J	Track gauge (for transportation)	mm 2.390
J'	Track gauge (working mode)	mm 3.490
K	Track shoe width	mm 600
L	Overall length	mm 17.200
M	Overall track width (for transportation)	mm 2.990
M'	Overall track width (working mode)	mm 4.090

* Specifications

DOOSAN engine		DV11
Horsepower	kW/rpm	218/1.800



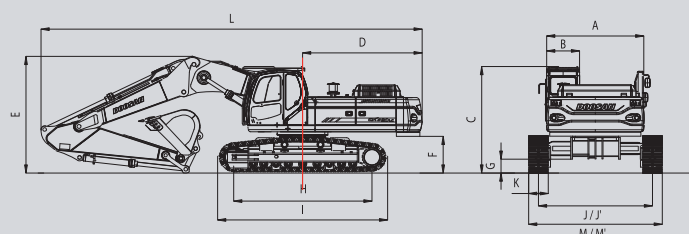
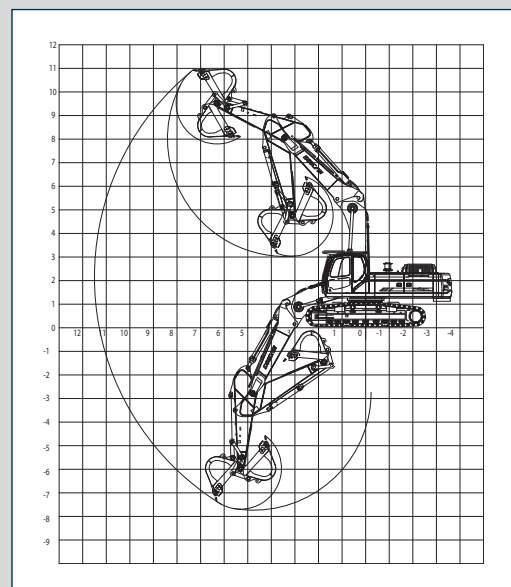
Optional configuration Digging Boom

* Dimensions

Standard Track		
A	Overall width of upper structure	mm 2.990
B	Overall width of cab.	mm 1.010
C	Overall height of cab.	mm 3.260
D	Tail swing radius	mm 3.660
E	Overall height of cab.	mm 3.600
F	Clearance under counterweight	mm 1.125
G	Ground clearance	mm 420
H	Tumbler distance	mm 4.250
I	Track length	mm 5.200
J	Track gauge (for transportation)	mm 2.390
J'	Track gauge (working mode)	mm 3.490
K	Track shoe width	mm 600
L	Overall length	mm 11.670
M	Overall track width (for transportation)	mm 2.990
M'	Overall track width (working mode)	mm 4.090

* Specifications

DOOSAN engine		DV11
Horsepower	kW/rpm	218/1.800



Lifting capacity



DX300 Front Demolition configuration

Boom: 8.600 mm - Arm: 2.600 + 5.000 mm – Counterweight: 6.800 kg – Weight: 34.650 kg

Units: 1.000 kg

A (m) B (m)	5		7		9		11		13		15		Max. lift			
															A(m)	
17	5,34 *	5,34 *												5,30 *	5,30 *	5,21
16	4,29 *	4,29 *	3,85 *	3,85 *										3,83 *	3,83 *	7,54
15			3,40 *	3,40 *	3,14 *	3,14 *								3,14 *	3,14 *	9,18
14			3,22 *	3,22 *	2,85 *	2,85 *								2,73 *	2,73 *	10,46
13			3,18 *	3,18 *	2,76 *	2,76 *	2,47 *	2,47 *						2,45 *	2,45 *	11,53
12			3,24 *	3,24 *	2,77 *	2,77 *	2,39 *	2,39 *						2,25 *	2,00 *	12,41
11					2,85 *	2,85 *	2,40 *	2,40 *	2,11 *	1,76				2,10 *	1,67	13,16
10					3,00 *	3,00 *	2,46 *	2,46 *	2,07 *	1,80				1,98 *	1,42	13,80
9							2,58 *	2,58 *	2,10 *	1,78				1,89 *	1,22	14,33
8							2,74 *	2,66	2,16 *	1,73				1,83 *	1,07	14,78
7							2,96 *	2,50	2,25 *	1,65	1,80 *	0,99		1,78 *	0,94	15,15
6									2,37 *	1,56	1,83 *	0,97		1,75 *	0,84	15,45
5									2,50 *	1,46	1,87 *	0,93		1,73 *	0,77	15,67
4									2,64 *	1,36	1,93 *	0,88		1,72 *	0,71	15,83
3									2,57 *	1,26	1,97 *	0,84		1,63 *	0,67	15,93
2									2,49 *	1,16	1,88 *	0,79		1,52 *	0,64	15,96
1									2,37 *	1,08	1,76 *	0,75		1,39 *	0,63	15,93
0									2,23 *	1,02	1,62 *	0,73		1,26 *	0,63	15,83

DX300 Digging Front configuration

Boom: 6.250 mm - Arm: 3.100 mm – Bucket: SAE 1,27 m³ – Counterweight: 6.800 kg – Weight: 33.100 kg

Units: 1.000 kg

A (m) B (m)	5		7		9		Max. lift				
									A(m)		
8									5,14 *	5,14 *	6,85
7					5,35 *	5,35 *			4,91 *	4,91 *	7,62
6					5,44 *	5,44 *			4,80 *	4,80 *	8,20
5					5,70 *	5,70 *			4,78 *	4,67	8,62
4	7,78 *	7,78 *			6,07 *	6,07 *			4,84 *	4,30	8,91
3	8,85 *	8,85 *			6,50 *	6,31	5,54 *	4,12	4,97 *	4,05	9,07
2	9,82 *	9,74			6,92 *	6,00	5,68 *	4,01	5,18 *	3,91	9,13
1	10,55 *	9,18			7,29 *	5,73	5,80 *	3,90	5,49 *	3,85	9,07
0	10,97 *	8,82			7,56 *	5,52			5,92 *	3,89	8,90

DX300 Straight Boom configuration

Boom: 7.270 mm - Arm: 3.500 mm – Bucket: SAE 0,81 m³ – Counterweight: 6.800 kg – Weight: 31.090 kg

Units: 1.000 kg

A (m) B (m)	4		6		8		10		Max. lift				
											A(m)		
11	5,41 *	5,41 *									4,61 *	4,61 *	4,89
10					4,67 *	4,67 *					4,11 *	4,11 *	6,43
9					5,17 *	5,17 *					3,87 *	3,87 *	7,51
8	5,05 *	5,05 *			5,39 *	5,39 *	4,38 *	4,38 *			3,75 *	3,75 *	8,35
7	5,34 *	5,34 *			5,77 *	5,77 *	5,17 *	5,17 *			3,69 *	3,69 *	8,99
6	6,81 *	6,81 *			6,64 *	6,64 *	5,84 *	5,58			3,70 *	3,70 *	9,48
5	13,26 *	13,26 *			8,75 *	8,45	6,71 *	5,44			3,75 *	3,75 *	9,85
4					9,50 *	8,04	7,22 *	5,28	4,20 *	3,73	3,84 *	3,67	10,10
3					9,84 *	7,65	7,32 *	5,11	4,90 *	3,67	3,99 *	3,53	10,25
2					10,00 *	7,33	7,35 *	4,96	5,40 *	3,61	4,19 *	3,46	10,30
1					9,90 *	7,10	7,28 *	4,84	5,50 *	3,57	4,46 *	3,45	10,25
0					9,53 *	6,97	7,05 *	4,75	5,18 *	3,54	4,83 *	3,50	10,10

1. The nominal forces are based on the SAE J1097 standard.

2. The load point is the hook at the rear of the bucket.

3. * = The nominal loads are based on hydraulic capacity.

4. The nominal loads do not exceed 87% of the hydraulic capacity or 75% of the capacity of the swing.

: Nominal force

: Nominal force at the side or 360°

DX300 Narrow - Front Demolition configuration

Boom: 8.600 mm - Arm: 2.600 + 5.000 mm – Counterweight: 6.800 kg – Weight: 34.550 kg

Units: 1.000 kg

A (m) B (m)	5		7		9		11		13		15		Max. lift		A(m)	
17	5,34 *	5,34 *												5,30 *	5,30 *	5,21
16	4,29 *	4,29 *	3,85 *	3,85 *										3,83 *	3,83 *	7,54
15			3,40 *	3,40 *	3,14 *	3,14 *								3,14 *	3,14 *	9,18
14			3,22 *	3,22 *	2,85 *	2,85 *								2,73 *	2,73 *	10,46
13			3,18 *	3,18 *	2,76 *	2,76 *	2,47 *	2,47 *						2,45 *	2,44 *	11,53
12			3,24 *	3,24 *	2,77 *	2,77 *	2,39 *	2,39 *						2,25 *	2,00 *	12,41
11					2,85 *	2,85 *	2,40 *	2,40 *	2,11 *	1,76				2,10 *	1,67	13,16
10					3,00 *	3,00 *	2,46 *	2,46 *	2,07 *	1,80				1,98 *	1,41	13,80
9							2,58 *	2,58 *	2,10 *	1,78				1,89 *	1,22	14,33
8							2,74 *	2,65	2,16 *	1,72				1,83 *	1,06	14,78
7							2,96 *	2,49	2,25 *	1,65	1,80 *	0,99		1,78 *	0,94	15,15
6									2,37 *	1,55	1,83 *	0,97		1,75 *	0,84	15,45
5									2,50 *	1,45	1,87 *	0,93		1,73 *	0,76	15,67
4									2,64 *	1,35	1,93 *	0,88		1,72 *	0,70	15,83
3									2,58 *	1,25	1,97 *	0,83		1,63 *	0,66	15,93
2									2,49 *	1,16	1,88 *	0,79		1,52 *	0,64	15,96
1									2,38 *	1,08	1,77 *	0,75		1,40 *	0,63	15,93
0									2,24 *	1,02	1,62 *	0,72		1,27 *	0,63	15,83

DX300 Narrow - Digging Front configuration

Boom: 6.250 mm - Arm: 3.100 mm – Bucket: SAE 1,27 m³ – Counterweight: 6.800 kg – Weight: 33.000 kg

Units: 1.000 kg

A (m) B (m)	5		7		9		Max. lift		A(m)		
8									5,14 *	5,47 *	6,85
7					5,35 *	5,35 *			4,91 *	4,91 *	7,62
6					5,44 *	5,44 *			4,80 *	4,80 *	8,20
5					5,70 *	5,70 *			4,78 *	4,66	8,62
4	7,78 *	7,78 *			6,07 *	6,07 *			4,84 *	4,29	8,91
3	8,85 *	8,85 *			6,50 *	6,29	5,54 *	4,10	4,97 *	4,04	9,07
2	9,82 *	9,71			6,92 *	5,98	5,68 *	3,99	5,18 *	3,89	9,13
1	10,55 *	9,15			7,29 *	5,71	5,80 *	3,89	5,49 *	3,84	9,07
0	10,97 *	8,79			7,56 *	5,50			5,92 *	3,88	8,90

DX300 Narrow - Straight Boom configuration

Boom: 7.270 mm - Arm: 3.500 mm – Bucket: SAE 0,93 m³ – Counterweight: 6.800 kg – Weight: 30.990 kg

Units: 1.000 kg

A (m) B (m)	4		6		8		10		Max. lift		A(m)		
11	5,41 *	5,41 *									4,61 *	4,61 *	4,89
10					4,67 *	4,67 *					4,11 *	4,11 *	6,43
9					5,17 *	5,17 *					3,87 *	3,87 *	7,51
8	5,05 *	5,05 *			5,39 *	5,39 *	4,38 *	4,38 *			3,75 *	3,75 *	8,35
7	5,34 *	5,34 *			5,77 *	5,77 *	5,17 *	5,17 *			3,69 *	3,69 *	8,99
6	6,81 *	6,81 *			6,64 *	6,64 *	5,84 *	5,56			3,70 *	3,70 *	9,48
5	13,26 *	13,26 *			8,75 *	8,42	6,71 *	5,42			3,75 *	3,75 *	9,85
4					9,50 *	8,02	7,22 *	5,26	4,20 *	3,72	3,84 *	3,66	10,10
3					9,84 *	7,63	7,32 *	5,09	4,90 *	3,66	3,99 *	3,52	10,25
2					10,00 *	7,30	7,35 *	4,94	5,40 *	3,60	4,19 *	3,45	10,30
1					9,90 *	7,07	7,28 *	4,82	5,50 *	3,55	4,46 *	3,44	10,25
0					9,53 *	6,94	7,05 *	4,74	5,18 *	3,53	4,83 *	3,48	10,10

Lifting capacity

DX340LC

DX340 Front Demolition configuration

Boom: 11.300 mm - Arm: 2.400 + 6.250 mm – Counterweight: 8.800 kg – Weight: 45.420 kg

Units: 1.000 kg

A (m) B (m)	10		12		14		16		18		20		Max. lift		A(m)
21													7,26 *	7,26 *	6,23
20													4,73 *	4,73 *	8,77
19	4,03 *	4,03 *											3,65 *	3,65 *	10,59
18	4,09 *	4,09 *	3,04 *	3,04 *									3,00 *	3,00 *	12,08
17	4,12 *	4,12 *	3,14 *	3,14 *									2,56 *	2,56 *	13,30
16	4,14 *	4,14 *	3,17 *	3,17 *	2,39 *	2,39 *							2,23 *	2,23 *	14,35
15	4,14 *	4,14 *	3,19 *	3,19 *	2,45 *	2,45 *							1,97 *	1,97 *	15,28
14	4,14 *	4,14 *	3,19 *	3,19 *	2,47 *	2,47 *	1,80 *	1,80 *					1,76 *	1,76 *	16,07
13			3,18 *	3,18 *	2,47 *	2,47 *	1,87 *	1,87 *					1,58 *	1,58 *	16,78
12			3,17 *	3,17 *	2,46 *	2,46 *	1,88 *	1,88 *					1,42 *	1,41	17,40
11					2,44 *	2,44 *	1,88 *	1,88 *					1,29 *	1,23	17,94
10					2,42 *	2,42 *	1,86 *	1,86 *	1,33 *	1,30			1,16 *	1,09	18,41
9					2,38 *	2,38 *	1,84 *	1,84 *	1,34 *	1,31			1,05 *	0,97	18,81
8							1,81 *	1,81 *	1,32 *	1,29			0,94 *	0,87	19,15
7							1,76 *	1,76 *	1,30 *	1,24			0,84 *	0,80	19,44
6							1,71 *	1,71 *	1,26 *	1,19			0,73 *	0,73	19,66
5							1,65 *	1,64	1,20 *	1,13			0,63 *	0,63 *	19,84
4							1,58 *	1,53	1,14 *	1,06			0,53 *	0,53 *	19,96
3							1,50 *	1,42	1,07 *	1,00	0,46 *	0,46 *	0,43 *	0,43 *	20,04
2							1,40 *	1,32	0,98 *	0,94	0,37 *	0,37 *	0,32 *	0,32 *	20,06
1							1,29 *	1,23	0,88 *	0,88 *	0,24 *	0,24 *	0,21 *	0,21 *	20,03
0							1,17 *	1,16	0,77 *	0,77 *			0,09 *	0,09 *	19,95

DX340 Digging Front configuration

Boom: 6.500 mm - Arm: 3.200 mm – Bucket: SAE 1,48 m³ – Counterweight: 8.800 kg – Weight: 40.850 kg

Units: 1.000 kg

A (m) B (m)	5		7		9		Max. lift		A(m)
8			7,74 *	7,74 *			7,79 *	7,79 *	7,28
7			7,69 *	7,69 *			7,65 *	7,65 *	8,01
6			7,94 *	7,94 *			7,61 *	7,61 *	8,56
5			8,38 *	8,38 *			7,61 *	7,61 *	8,96
4	11,75 *	11,75 *	8,95 *	8,95 *	7,74 *	7,74 *	7,66 *	7,66 *	9,23
3	13,29 *	13,29 *	9,57 *	9,57 *	7,94 *	7,94 *	7,74 *	7,72	9,39
2	14,57 *	14,57 *	10,14 *	10,14 *	8,14 *	8,13	7,84 *	7,58	9,43
1	15,40 *	15,40 *	10,60 *	10,60 *	8,29 *	8,03	7,96 *	7,58	9,37
0	15,74 *	15,74 *	10,88 *	10,88 *	8,32 *	7,96	8,10 *	7,72	9,20

1. The nominal forces are based on the SAE J1097 standard.

2. The load point is the hook at the rear of the bucket.

3. * = The nominal loads are based on hydraulic capacity.

4. The nominal loads do not exceed 87% of the hydraulic capacity or 75% of the capacity of the swing.

: Nominal force

: Nominal force at the side or 360°

DX420 Front Demolition configuration

Boom: 13.000 mm - Arm: 2.600 + 8.800 mm – Counterweight: 10.000 kg – Weight: 51.490 kg

Units: 1.000 kg

B (m)	8		10		12		14		16		18		20		22		24		Max. lift		
																					A (m)
26																			14,66 *	14,66 *	4,41
25	7,53 *	7,53 *																	7,29 *	7,29 *	8,23
24	7,46 *	7,46 *	5,79 *	5,79 *															5,36 *	5,36 *	10,66
23			5,77 *	5,77 *	4,63 *	4,63 *													4,38 *	4,38 *	12,50
22			5,75 *	5,75 *	4,64 *	4,64 *	3,77 *	3,77 *											3,74 *	3,74 *	14,08
21			5,73 *	5,73 *	4,63 *	4,63 *	3,80 *	3,80 *											3,29 *	3,29 *	15,40
20			5,72 *	5,72 *	4,63 *	4,63 *	3,81 *	3,81 *	3,14 *	3,14 *									2,95 *	2,95 *	16,57
19					4,63 *	4,63 *	3,82 *	3,82 *	3,17 *	3,17 *									2,68 *	2,68 *	17,58
18					4,63 *	4,63 *	3,82 *	3,82 *	3,18 *	3,18 *	2,61 *	2,61 *							2,45 *	2,34	18,50
17					4,63 *	4,63 *	3,82 *	3,82 *	3,18 *	3,18 *	2,64 *	2,64 *							2,26 *	2,07	19,32
16			5,72 *	5,72 *	4,63 *	4,63 *	3,82 *	3,82 *	3,19 *	3,19 *	2,65 *	2,65 *	2,11 *	1,88					2,09 *	1,85	20,05
15					4,64 *	4,64 *	3,83 *	3,83 *	3,19 *	3,19 *	2,65 *	2,65 *	2,16 *	2,00					1,94 *	1,66	20,72
14					4,65 *	4,65 *	3,83 *	3,83 *	3,18 *	3,18 *	2,65 *	2,65 *	2,18 *	2,04					1,81 *	1,50	21,31
13							3,83 *	3,83 *	3,18 *	3,18 *	2,65 *	2,65 *	2,18 *	2,05					1,69 *	1,36	21,84
12							3,82 *	3,82 *	3,17 *	3,17 *	2,64 *	2,64 *	2,18 *	2,04	1,69 *	1,37			1,57 *	1,25	22,31
11							3,82 *	3,82 *	3,16 *	3,16 *	2,63 *	2,63 *	2,17 *	2,01	1,70 *	1,39			1,47 *	1,15	22,73
10									3,15 *	3,15 *	2,61 *	2,61 *	2,15 *	1,97	1,70 *	1,39			1,37 *	1,07	23,09
9									3,13 *	3,13 *	2,59 *	2,56	2,13 *	1,92	1,69 *	1,37			1,27 *	0,99	23,41
8									3,10 *	3,10 *	2,57 *	2,47	2,11 *	1,86	1,67 *	1,35			1,18 *	0,93	23,69
7									3,07 *	3,07 *	2,53 *	2,37	2,07 *	1,79	1,64 *	1,31			1,09 *	0,88	23,91
6									3,02 *	2,93	2,49 *	2,26	2,03 *	1,72	1,60 *	1,27	1,05 *	0,86	1,00 *	0,84	24,09
5											2,44 *	2,15	1,99 *	1,65	1,56 *	1,23	1,02 *	0,86	0,90 *	0,81	24,23
4											2,39 *	2,05	1,93 *	1,58	1,50 *	1,18	0,97 *	0,84	0,81 *	0,78	24,33
3											2,32 *	1,94	1,87 *	1,51	1,44 *	1,14	0,91 *	0,82	0,71 *	0,71 *	24,39
2											2,24 *	1,85	1,79 *	1,44	1,37 *	1,10	0,82 *	0,81	0,62 *	0,62 *	24,40
1											2,15 *	1,75	1,71 *	1,38	1,28 *	1,06	0,72 *	0,72 *	0,51 *	0,51 *	24,37
0											2,04 *	1,67	1,61 *	1,32	1,18 *	1,02	0,59 *	0,59 *	0,40 *	0,40 *	24,30

DX420 Digging Front configuration

Boom: 6.700 mm - Arm: 3.250 mm – Bucket: SAE 1,90 m³ – Counterweight: 10.000 kg – Weight: 48.520 kg

Units: 1.000 kg

B (m)	3		5		7		9		Max. lift				
											A (m)		
9											9,29 *	9,29 *	6,89
8							8,93 *	8,93 *			8,95 *	8,95 *	7,78
7							9,01 *	9,01 *			8,70 *	8,70 *	8,45
6							9,38 *	9,38 *			8,60 *	8,60 *	8,96
5				12,54 *	12,54 *	9,95 *	9,95 *	8,78 *	8,78 *	8,63 *	8,63 *	9,33	
4				14,31 *	14,31 *	10,63 *	10,63 *	8,99 *	8,99 *	8,72 *	8,70	9,59	
3				16,06 *	16,06 *	11,34 *	11,34 *	9,25 *	9,25 *	8,77 *	8,40	9,73	
2				17,44 *	17,44 *	11,99 *	11,99 *	9,49 *	9,32	8,85 *	8,25	9,76	
1				18,23 *	18,23 *	12,47 *	12,47 *	9,66 *	9,18	8,95 *	8,24	9,70	
0				18,46 *	18,46 *	12,74 *	12,74 *	9,70 *	9,07	9,05 *	8,39	9,52	

DOOSAN Infracore Europe S.A.

1^A, rue Achille Degrâce
7080 Frameries, Belgium
Tel : +32-65-61 32 30 • Fax : +32-65-67 73 38

DOOSAN Infracore France

ZAC de la Clef Saint Pierre - Buroplus 2
1^A, avenue Jean d'Alembert
78990 Elancourt, France
Tel : +33-1-30 16 21 41 • Fax : +33-1-30 16 21 44

DOOSAN Infracore U.K., Ltd.

Doosan House, Unit 6, 3 Heol-Y-Gamlas, Parc Nantgarw,
Nantgarw, Cardiff CF15 7QU, U.K.
Tel : +44-1443-84-2273 • Fax : +44-1443-84-1933

DOOSAN Infracore Europe S.A. Germany

Heinrich-von-Stephan-Str. 2
D-40764, Langenfeld, Germany
Tel : +49-2173-2035212 • Fax : +49-2173-2035219

Head Office

Doosan Tower 26TH FL. 18-12, Euljiro-6Ga,
Jung-Gu, Seoul, Korea 100-730
Tel : +82-2-3389-8114 • Fax : +82-2-3389-8117

www.doosaninfracore.com

www.doosaneurope.com

