

* | 124 kW (166 HP) at 1900 rpm

▲ | 23700 - 24600 kg

📦 | 0.51 - 1.28 m³



DX235LCR | Crawler Excavator



DX235LCR



Take a tour	pages 4 - 5
Performance	pages 6 - 7
Comfort	pages 8 - 9
Control	pages 10 - 11
Reliability	pages 12 - 13
Maintenance	pages 14 - 15
Technical specifications	pages 16 - 22
Equipment	pages 23

COMPACTNESS ALLIED WITH POWER



DO YOU NEED THE FLEXIBILITY TO WORK IN CONFINED AREAS WITHOUT COMPROMISING ON PERFORMANCE AND PRODUCTIVITY?

The new DX235LCR has the flexibility to tackle almost any job, in urban areas and **confined spaces**, on **bridges or on roads** with lower operating costs, more uptime and great ergonomics.

- DOOSAN **6 cylinder engine** and e-EPOS system for optimum productivity and fuel economy
- High level performance with **optimised weight balance** to achieve **enhanced lifting capacity** and **breakout force**
- **Compact** profile for all-round versatility
- Spacious **ROPS** cab with excellent visibility and unbeatable comfort

TAKE A TOUR

Large, heavy-duty boom and arm cylinders for smooth, powerful operation

Stronger reinforced cast steel pivot points

Reliable and well protected hydraulic, electric and lubrication routings with simple, optimised layout

- Joystick and switches installed in armrest for much more precise operation
- New 7" TFT LCD colour monitor is user-friendly and gives full access to machine settings and maintenance data
- 3 working modes with auto idle
- All-round visibility with rear camera and large side mirrors

- Maintenance data available directly from control panel
- Safe, easy access to all components from ground level
- Extra long-life oil and fuel filters with water separator installed as standard
- Centralised greasing points
- PC access for faster maintenance and repairs
- Self-diagnostic function
- Reliable DOOSAN parts

Record bucket breakout force of 16.1 ton

- Heavy-duty X-shaped undercarriage with integrated track spring and idler as well as robust box section track frame



- Pressurised ROPS cab keeps noise and vibration low
- Large, flat space is easy to keep clean
- Robust ergonomic pedals
- Heated air suspension seat standard
- Large sun roof for extra overhead visibility
- Air conditioning with climate control

- Proven DOOSAN DL06 "Common Rail" engine delivers impressive power with precise fuel management
- e-EPOS System (Electronic Power Optimising System) optimises combustion, ensuring the most efficient conversion of engine output into hydraulic performance while minimising pollution
- Hydraulic power boost function delivers extra force when you need it

High clearance and short swing radius
Transport length only 8.96 m

2.99 m wide undercarriage for easy transportation and great stability
Record traction force of 234 kN

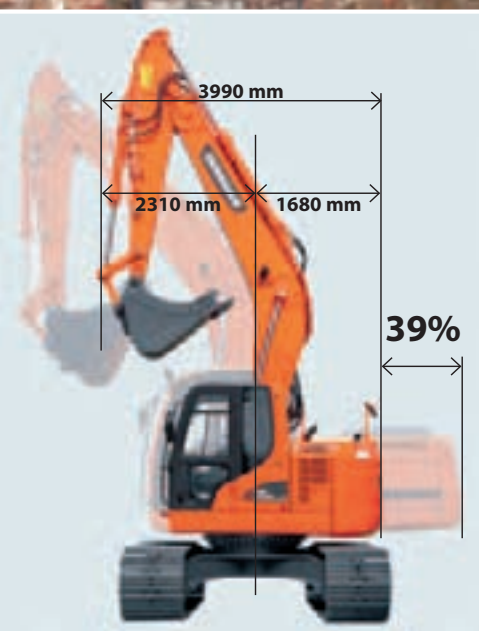
DX235LCR

Performance – ahead of the game

The DX235LCR is powered by a "Common Rail" engine that precisely manages power delivery and fuel consumption to get the maximum performance out of every litre of fuel.

Leading the way to handle the toughest jobs with ease, with:

- A maximum output of 124 kW with a record traction force of 234 kN
- A front lifting capacity of 10 ton at 4.5 m reach and 3 m height
- An arm breakout force of nearly 11.1 ton and a bucket breakout force of 16.1 ton

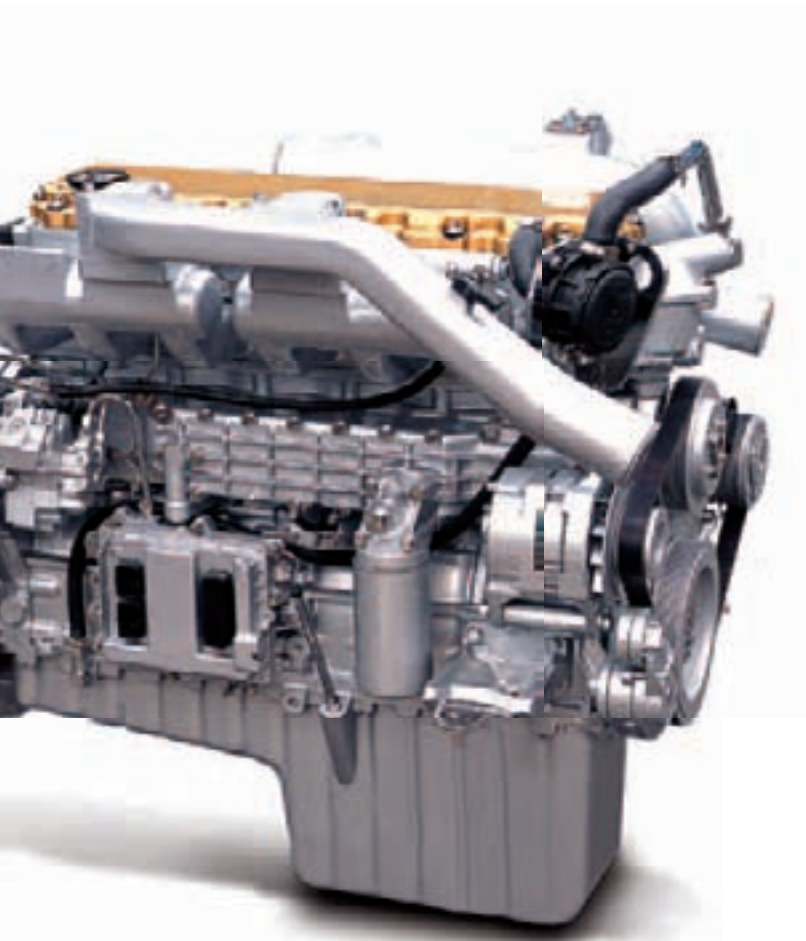


Reduced tail swing radius

To facilitate use in the city and in tight locations, the tail swing radius is reduced by 39%. The smallest swing diameter is only 3990 mm.

EVEN IN CONFINED SPACES, YOU STILL NEED TOP PERFORMANCE!

You can depend on the DX235LCR to deliver the power you need to get the job done, however small the work area. Rear swing radius is 1680 mm and front swing radius is only 2310 mm. That means you can get very close to buildings, or work on roads with minimal traffic obstruction (cab top/front guards optional).



EFFICIENT FUEL AND HYDRAULIC MANAGEMENT

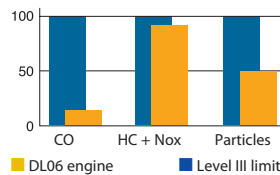
Already known for its outstanding reliability, the "Common Rail" DOOSAN DL06 engine has been optimised for the DX235LCR. In combination with the new e-EPOS electronic control system, it offers the ultimate in power delivery and fuel economy.

"Common Rail" DOOSAN DL06 engine

The heart of the DX235LCR is its "Common Rail" DOOSAN DL06 engine, carefully designed with common rail injection and 4 valves per cylinder. Its 6-cylinder configuration means it can achieve the same performance with lower rpm, leading to reduced noise both inside and outside the cab. The engine produces 166 HP (124 kW) at only 1900 rpm. Its powerful torque allows efficient use of the hydraulic system and faster working cycles.

Protecting the environment

DOOSAN continues to invest significantly in technologies that combine the protection of nature with high machine performance. Ecology was uppermost in the minds of our research team right from the start of the DX235LCR design.



The DOOSAN DL06 engine is environmentally friendly, limiting all types of emissions.

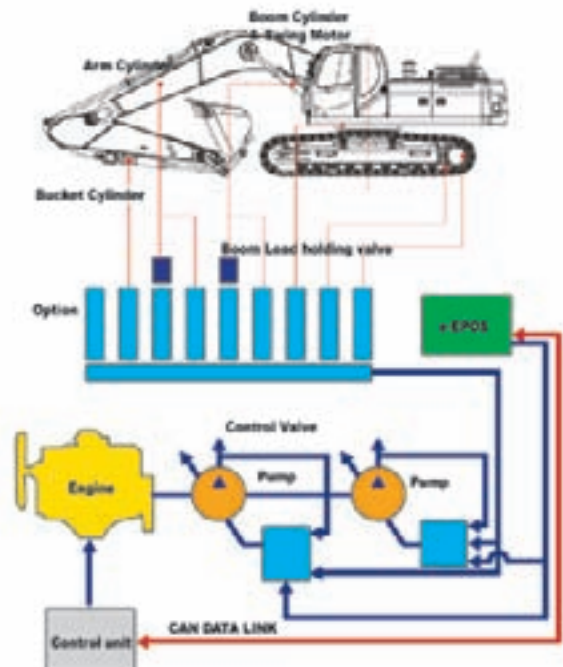
ADVANCED TECHNOLOGY FOR OPTIMUM POWER MANAGEMENT

e-EPOS system (Electronic Power Optimising System)

If the engine is the heart of the DX235LCR, the e-EPOS is its brain. It provides a perfectly synchronised communication link between the engine's ECU (Electronic Control Unit) and the hydraulic system. A CAN (Controller Area Network) system enables a constant flow of information between the engine and hydraulic system, ensuring power is delivered exactly as needed.

Simple and efficient

- The choice between Standard, Power and Economy operating modes guarantees optimum performance in all conditions.
- Electronic control of fuel consumption optimises efficiency.
- The auto-idle enables fuel savings.
- Regulation and precise control of the flow rate required by the work group.
- A self-diagnosis function allows technical problems to be resolved quickly and efficiently.
- An operational memory provides a graphic display of the machine status.
- Maintenance and oil change intervals can be displayed.



Quick and efficient

The main hydraulic pumps have a capacity of 2 x 156 l/min, reducing cycle times for higher productivity. A high capacity gear pump improves the pilot line efficiency.



Smooth and fast

The swing drive minimises shocks during rotation while making increased torque available to ensure rapid cycles.

Comfort – rightly your favourite cab

The DX235LCR ROPS cab has everything you need to work in comfort, confidence and safety. Bright and spacious, it gives you room to move and an excellent view of your surroundings. By enhancing the fan size and reducing engine rpm, we have reduced noise both inside and outside the cab. The heated air suspension seat is comfortable and height adjustable. It also features a 2-stage sliding system enabling you to find the best fit and the easiest reach to the controls. An air conditioning system means you can work in comfort whatever the weather.



Air conditioning

The electronically controlled air conditioning system allows you to adjust the airflow for all conditions by selecting from five operating modes.



Telescopic height adjustability



2-stage sliding adjustability

1

2

ERGONOMIC SEAT DESIGN

Feel the comfort of a seat that fits you perfectly: Using a dual positioning cursor, you can slide the seat back from the joysticks for the best working position. You can also slide the entire seat assembly to adjust the reach to the control pedals according to your leg length.

- 1 Large sun roof
- 2 Sun visor
- 3 Straight and ergonomic pedals
- 4 Flat, spacious, easy-to-clean floor
- 5 Upper front window is strut-assisted for easy, reliable adjustment and integrates a sun shade
- 6 Joysticks and switches are integrated in adjustable control consoles

5

6

4

3

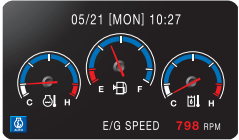


Cab vibration absorbers

The cab is mounted on special viscous vibration isolators which absorb shocks and limit noise for more operator comfort.

Precise control for top efficiency

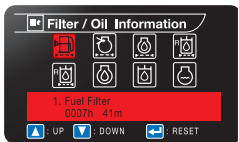
Intuitive control makes it easy for any operator to use the full potential of this machine's remarkable performance. A range of control features gives you the best overview, the easiest access to all functions and effortless handling.



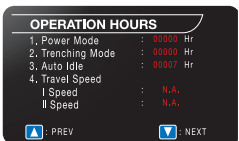
Standard screen



Anti-theft protection



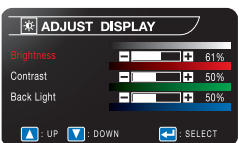
Filter/oil information



Operation history



Flow rate control



Contrast control



Colour LCD monitor panel

The 7" TFT LCD panel is suitable for day and night work. The monitor is user-friendly and gives full access to machine settings and maintenance data. Any abnormality is clearly displayed on the screen, allowing you to work safely and confidently with an accurate overview of all conditions.

1 Gauges

- Engine coolant temperature
- Fuel
- Hydraulic oil temperature

2 Working modes

- Standard, Power and Economy
- Auto-idle
- Flow rate control

3 Navigation modes

- Rear view camera
- Display selector
- Select

Tailored performance for maximum efficiency

The DX235LCR allows you to select your preferred performance option from different working modes:

- Standard mode: uses 85% engine power for optimum fuel efficiency when carrying out general work.
- Power mode: uses 100% engine power for heavy work.
- Economy mode: allows you to reduce fuel consumption and noise without compromising on performance for light work.

Rear view camera

For extra peace of mind, a rear view camera offers a clear view of what's happening behind the machine.





Control panel, everything's within reach!

The control panel is clear, simple to read and positioned for easy use, adding to safety and confidence.



Mobile phone box and 12V power socket



Glass antenna for AM/FM radio



Cigarette lighter and cup holder

Simple operation

Levelling jobs, movement of lifted loads and other operations are all controlled easily and precisely with joysticks. Buttons integrated on the joysticks are used to operate additional equipment such as grabs, crushers and grapples and to activate the power boost function.

Reliability – designed for rock-solid dependability

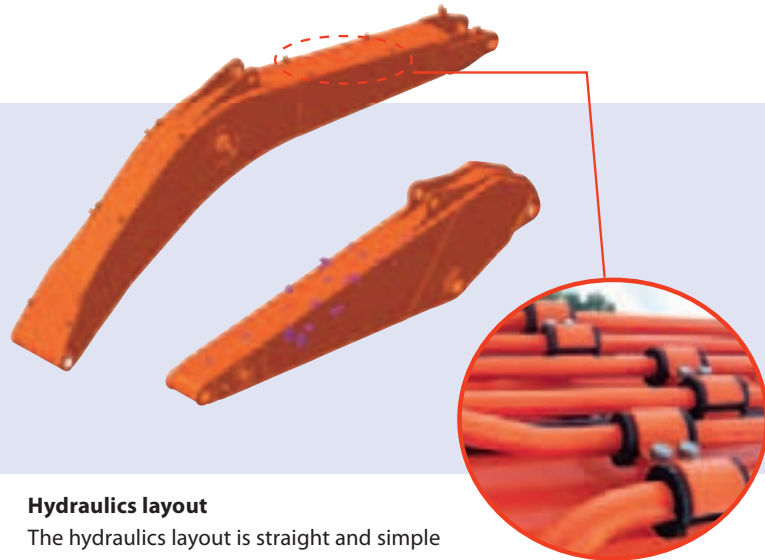
We know that reliability has a direct impact on your profits. That's why we leave nothing to chance when it comes to the construction of our excavators. We use advanced computer-assisted design techniques to create robust structures. All materials and components are then tested under the most extreme conditions to make sure you get the best value for your money.

Reinforced boom

Finite Element Analysis (FEA) has been used to calculate the best distribution of loads throughout the boom structure. Combined with increased material thickness, this means that element fatigue is limited and both reliability and component life are increased.

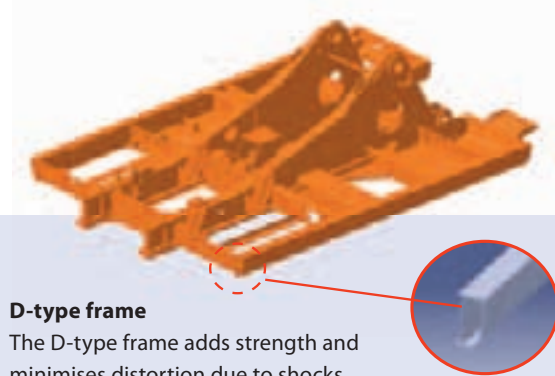
Arm assembly

Cast elements and reinforcements have been added to give the arm assembly greater strength and a longer lifetime.



Hydraulics layout

The hydraulics layout is straight and simple for a neat, compact design. Good protection enhances its reliability.

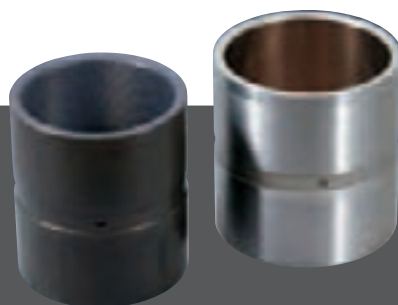


D-type frame

The D-type frame adds strength and minimises distortion due to shocks. The frame is built using only high quality components, carefully selected for their strength and resistance to wear.

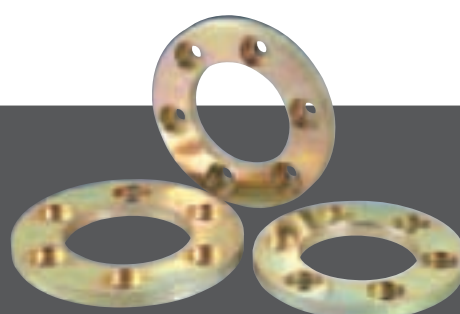
X-chassis

The X-shaped undercarriage has been designed using Finite Element Analysis and 3D computer simulation to ensure optimum structural integrity and durability. The swing gear is solid and stable.



Bushings

A thoroughly lubricated metal is used for the boom pivot in order to increase the component lifetime and extend the greasing intervals to 250 hours. The bucket pivot features a rolled bushing with very fine grooves, only requiring greasing every 50 hours.



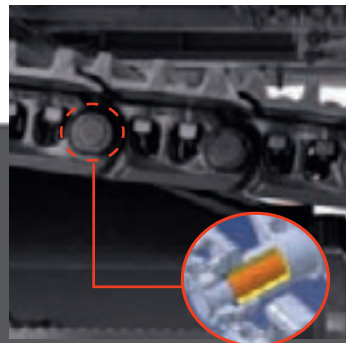
Ultra hard wear-resistant discs

New materials have been used to enhance resistance to wear and to increase service intervals. Wear plates on the inside and the outside of the bucket lugs greatly increase disc lifetime.



Polymer shim

A polymer shim is added to the bucket pivot to maintain precise control over the equipment and extend greasing intervals to 250 hours.



Integrated track spring and idler

The track spring and idler have been joined together for long-lasting performance and convenient maintenance.

Tracks

For long-term durability in all conditions, the chain is composed of sealed, self lubricating links which are isolated from all external contamination. The tracks are locked by mechanically bolted pins.



Quick, simple maintenance for maximum uptime

The new DX235LCR is built for continuous, reliable work. Its convenient design ensures that maintenance operations can be carried out quickly and at long intervals. That means you can depend on its availability on site when you need it, keeping costs down and raising productivity.



Access to components

Access to the various radiators is very easy, making cleaning easier. Engine parts can be easily reached via the top and side panels.



Air filter

The large capacity forced air cleaner removes over 99% of airborne particles. This reduces the risk of engine contamination and allows longer cartridge change intervals.



Protective oil return filter

The protection of the hydraulic system is made more effective by the use of glass fibre technology in the main oil return filter. With more than 99.5% of foreign particles filtered out, the oil change interval is increased.



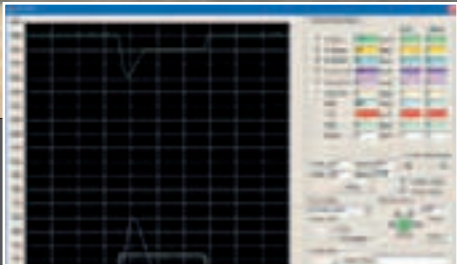
Engine oil filter

The engine oil filter offers a high level of filtration allowing a long interval of 500 hours between changes. It is easy to access and is positioned to avoid contaminating the surrounding environment.



Fuel pre-filter with water separator sensor

High efficiency fuel filtration is attained by the use of multiple filters. These include a fuel pre-filter fitted with a water separator that removes moisture, dirt and debris from the fuel. A warning sensor at each fuel filter indicates when water draining is required.



PC monitoring

A PC monitoring function enables connection to the e-EPOS system. Thus, various parameters can be checked during maintenance, including pump pressures, engine rotation and engine speed. These can be saved and printed for analysis.



Convenient fuse Box

The fuse box is located in the storage compartment behind the seat for convenient access.



Centralised greasing points

To make maintenance easier, the equipment greasing points have been centralised.

Technical specifications

* Engine

• Model

Doosan DL06
"Common Rail" engine with direct fuel injection and electronic control, 4 valves per cylinder, vertical injectors, water-cooled, turbo-charged with air-to-air inter-cooler.

• No. of cylinders

6

• Nominal flywheel power

124 kW (166 HP) at 1900 rpm (SAE J1349, net)

• Max. torque

78 kgf/m (765 Nm) at 1400 rpm

• Piston displacement

5890 cc

• Bore x stroke

108 mm x 139 mm

• Starter

24 V / 4.5 kW

• Batteries

2 x 12 V / 100 Ah

• Air filter

Double element with auto dust evacuation.

* Hydraulic system

The brain of the DX235LCR is the e-EPOS (Electronic Power Optimising System). It allows the efficiency of the hydraulic system to be optimised for all working conditions and minimises fuel consumption. The e-EPOS is connected to the engine's Electronic Control Unit (ECU) via a data transfer link to harmonise the operation of the engine and hydraulics.

- The hydraulic system enables independent or combined operations.
- Two travel speeds offer either increased torque or high speed.
- Cross-sensing pump system for fuel savings
- Auto-idle system
- Three working modes
- Button control of flow in auxiliary equipment circuits
- Computer-aided pump power control

• Main pumps

2 variable displacement axial piston pumps
Max. flow: 2 x 220.2 l/min

• Pilot pump

Gear pump – max. flow: 27.4 l/min

• Maximum system pressure

Boom/arm/bucket: 350 kg/cm² (343 bar)
Power mode: 370 kg/cm² (363 bar)
Travel: 330 kg/cm² (323 bar)
Rotation: 300 kg/cm² (294 bar)

* Weight

Boom 5700 mm • Arm 2900 mm • Bucket SAE 0.92 m³

Shoe width (mm)	Operating weight (kg)	Ground pressure (kg/m ²)
600 (std)	23700	0.50
700	24000	0.43
800	24300	0.38
900	24600	0.34

* Undercarriage

Very robust construction. All welded structures designed to limit stresses. High-quality, durable materials. Lateral chassis welded and rigidly attached to undercarriage. Track rollers lubricated for life. Idlers and sprockets fitted with floating seals. Track shoes made of induction-hardened alloy with triple grouser. Heat-treated connecting pins. Hydraulic track adjuster with shock absorbing tension mechanism.

• Number of rollers and track shoes per side

Upper rollers: 2 (standard shoes)
Lower rollers: 9
Shoes: 49
Total length of track: 4445 mm

* Hydraulic cylinders

Piston rods and cylinder bodies of high-strength steel. Shock absorbing mechanism fitted in all cylinders for shock-free operation and extended piston life.

Cylinders	Quantity	Bore x rod diameter x stroke
Boom	2	130 X 90 X 1355 mm
Arm	1	135 X 95 X 1490 mm
Bucket	1	120 X 80 X 1060 mm

* Environment

Noise levels comply with environmental regulations (dynamic values).

• Noise level LwA

103 dB (A) (2000/14/EC)

• Operator LpA

71 dB (A) (ISO 6396)

* Swing mechanism

- An axial piston motor with two-stage planetary reduction gear is used for the swing.
- Increased swing torque reduces swing time.
- Internal induction-hardened gear.
- Internal gear and pinion immersed in lubricant bath.
- The swing brake for parking is activated by spring and released hydraulically.
- Swing speed: 0 to 11.3 rpm

* Drive

Each track is driven by an independent axial piston motor through a planetary reduction gearbox. Two levers with control pedals guarantee smooth travel with counter-rotation on demand.

• Travel speed (fast/slow)

5.8 / 3.1 km/h

• Maximum traction force

12300 kg / 23400 kgf

• Maximum gradeability

35° / 70%

* Fluid capacities

• Fuel tank

320 l

• Cooling system (radiator capacity)

34 l

• Engine oil

27 l

• Swing drive

5 l

• Final drive

3.3 l (each)

• Hydraulic system / level

230 l / 130 l

• Hydraulic tank

345 l

* Buckets

Capacity (m ³)	Width (mm)		Weight (kg)	Recommended arm (mm)	
	Without side cutters	With side cutters		2400	2900
SAE					
0.51	722	772	529	A	A
0.81	1064	1126	654	A	A
0.92 (Recommended)	1172	1236	710	A	B
1.05	1308	1370	751	A	B
1.17	1428	1491	809	B	C
1.28	1542	1605	848	C	-

A. Suitable for materials with a density less than or equal to 2000 kg/m³

B. Suitable for materials with a density less than or equal to 1600 kg/m³

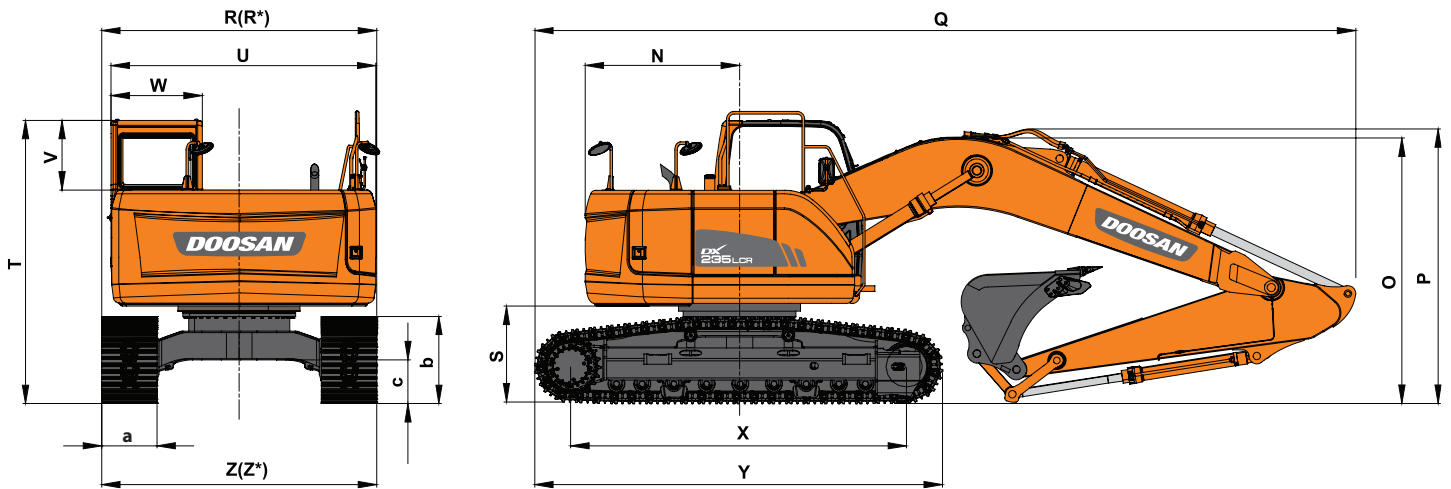
C. Suitable for materials with a density less than or equal to 1100 kg/m³

* Digging forces (ISO)

Arm	2.4 m	2.9 m
Bucket digging force*	15200 kgf 149 kN	15200 kgf 149 kN
Arm digging force*	12300 kgf 120 kN	11100 kgf 109 kN

* Max. force

Dimensions



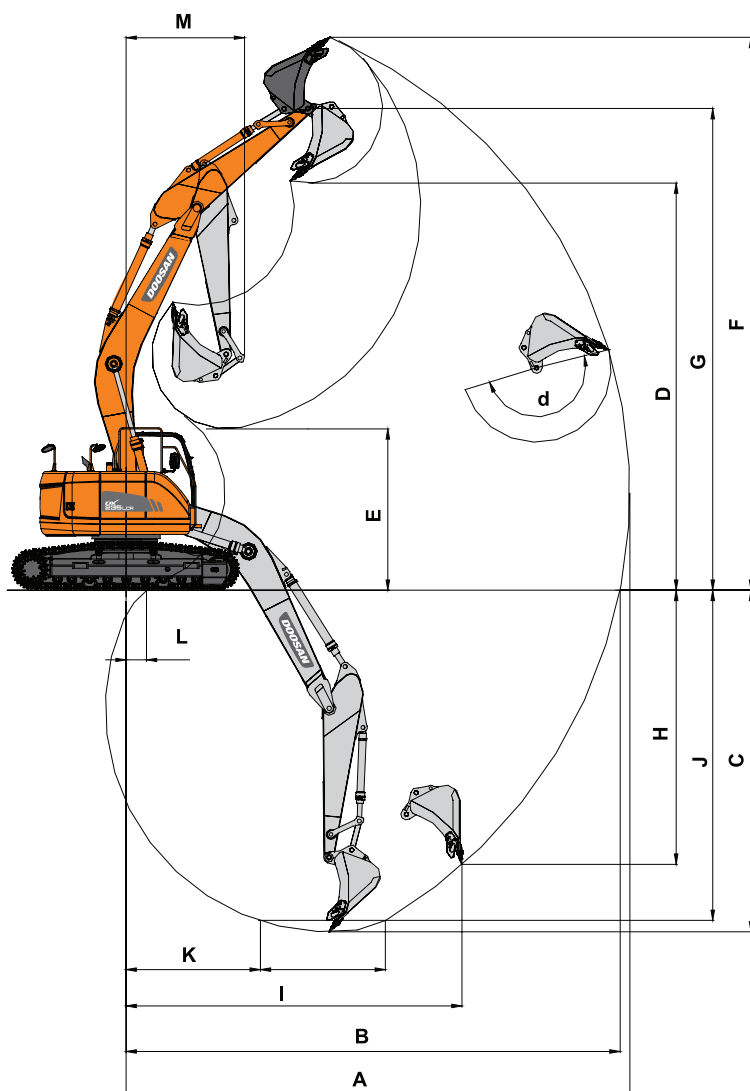
* Dimensions

Boom 5700 mm • Arm 2900 mm • Shoe 600 mm - Standard configuration.

Boom length (one piece) - mm		5700	
Arm length - mm		2900	2400
Bucket capacity - m ³		0.92	1.05
N	Tail swing radius - mm	1680	-
O	Shipping height (boom) - mm	2870	2980
P	Shipping height (hose) - mm	2955	3070
Q	Shipping length - mm	8955	9010
R	Shipping width (Std) - mm	2990	-
S	C/Weight clearance - mm	1025	-
T	Height over cab - mm	3080	-
U	House width - mm	2870	-
V	Cab height above house - mm	760	-
W	Cab width - mm	980	-
X	Tumbler distance - mm	3650	-
Y	Track length - mm	4445	-
Z	Undercarriage width (Std) - mm	2990	-
a	Shoe width - mm	600	-
b	Track height - mm	947	-
c	Ground clearance - mm	480	-

* Components weights & dimensions

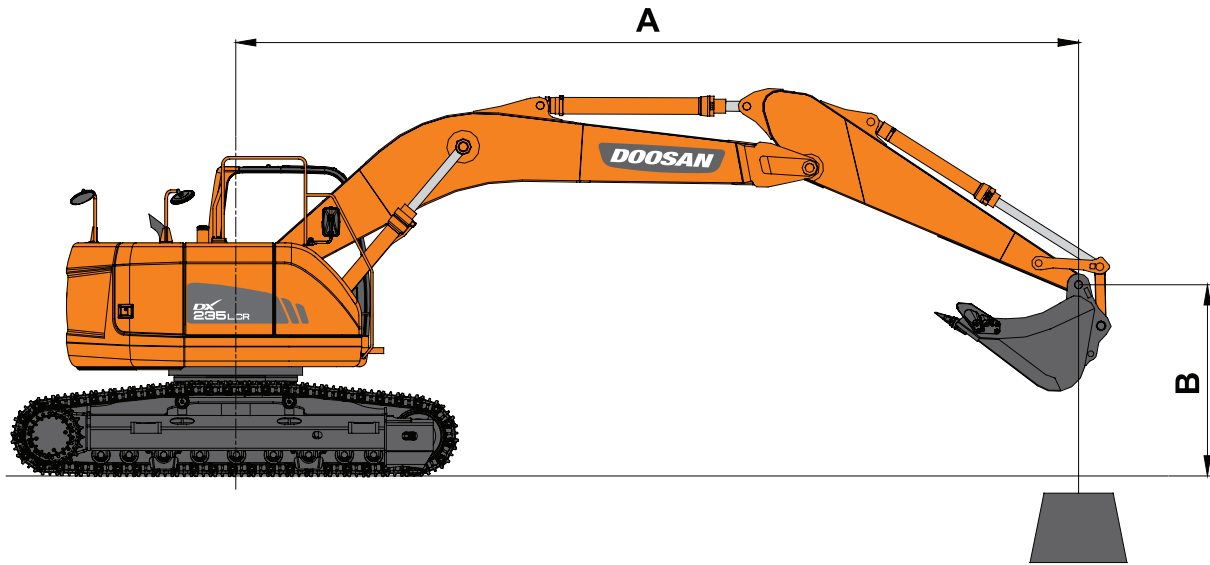
Item	Unit	DX235LCR	Remarks
Superstructure w/o front	kg	11920	Including counterweight
Counterweight	kg	6480	
Lower structure assembly	kg	7675	With 600 mm shoe
Front assembly	kg	4105	
Boom (5.7 m)	kg	1500	Including bushing
Arm (2.9 m)	kg	680	Including bushing
Bucket (0.92m ³)	kg	710	
Boom cylinder (ea)	kg	215	Including bushing
Arm cylinder	kg	245	Including bushing
Bucket cylinder	kg	155	Including bushing



* Working range

Boom length (one piece) - mm		5700	
Arm length - mm		2900	2400
Bucket capacity - m ³		0.92	1.05
A	Max. digging reach - mm	9820	9415
B	Max. digging reach at ground level - mm	9630	9215
C	Max. digging depth - mm	6670	6170
D	Max. dumping height - mm	7955	7705
E	Min. dumping height - mm	3155	3740
F	Max. digging height - mm	10795	10565
G	Max. bucket pin height - mm	9405	9160
H	Max. vertical wall depth - mm	5350	5050
I	Max. radius vertical - mm	6550	6270
J	Max. digging depth - mm	6440	5940
K	Min. radius - mm	2570	2660
L	Min. digging reach - mm	395	1630
M	Min. swing radius - mm	2310	2545
d	Bucket angle - deg	177	177

Lifting capacities



Standard configuration

Boom : 5700 mm - Arm : 2900 mm - Bucket : SAE 0.92 m³ (CECE 0.81 m³) Shoe : 600 mm

Units: 1000 kg

B (m)	A (m)		2		3		4		5		6		7		8		Max. lift		A (m)	
	☺	☺	☺	☺	☺	☺	☺	☺	☺	☺	☺	☺	☺	☺	☺	☺	☺	☺		
8									*4.77 *	*4.77 *								*3.95	*3.95	5.48
7									*5.46	*5.46	*4.66	*4.66						*3.75	*3.75	6.43
6									*5.76	*5.76	*5.61	4.61	*4.06	3.46				*3.69	3.34	7.13
5					*7.02	*7.02	*6.40	6.14	*5.97	4.48	*5.38	3.39						*3.73	2.88	7.62
4	*17.47	*17.47	*11.08	*11.08	*8.62	8.49	*7.31	5.84	*6.51	4.30	5.62	3.29						*3.85	2.59	7.96
3			*15.02	12.62	*10.49	7.86	*8.37	5.51	7.09	4.10	5.48	3.17	4.37	2.49				*4.05	2.40	8.16
2			*7.98	*7.98	*12.16	7.31	9.31	5.19	6.87	3.91	5.34	3.04	4.29	2.42				4.09	2.30	8.23
1			*7.79	*7.79	*13.23	6.94	9.02	4.94	6.68	3.74	5.22	2.93	4.22	2.35				4.07	2.26	8.18
0 (Ground)			*9.50	*9.50	13.15	6.75	8.83	4.78	6.55	3.62	5.13	2.85	4.17	2.30				4.17	2.3	8.00
-1	*8.70	*8.70	*11.88	11.06	13.06	6.68	8.73	4.69	6.47	3.55	5.08	2.80						4.4	2.43	7.69
-2	*11.36	*11.36	*14.82	11.15	*12.92	6.69	8.71	4.68	6.45	3.53	5.08	2.80						4.84	2.67	7.23
-3	*14.30	*14.30	*15.04	11.31	*11.89	6.78	8.77	4.73	6.50	3.58								5.64	3.12	6.58
-4	*16.51	*16.51	*12.79	11.56	*10.27	6.94	*8.29	4.85										*7.07	4.00	5.68
-5			*9.50	*9.50	*7.65	7.21												*6.96	6.26	4.37
-6																				

Option 1

Boom: 5700 mm - Arm: 2400 mm - Bucket: SAE 1.05 m³ HEAPED (CECE 0.92 m³) - Shoe : 600 mm

Units: 1000 kg

B (m) \ A (m)	2		3		4		5		6		7		Max. lift		A (m)
8					*6.40	*6.40							*5.44	*5.44	4.81
7					*6.33	*6.33	*6.20	*6.20					*5.14	4.75	5.88
6					*6.88	6.88	*6.46	6.25	*6.20	4.54			*5.06	3.78	6.62
5			*9.64	*9.64	*8.02	*8.02	*7.09	6.03	*6.51	4.42	5.68	3.35	*5.12	3.22	7.16
4			*13.16	*13.16	*9.67	8.26	*7.99	5.74	*7.02	4.25	5.58	3.27	4.94	2.87	7.51
3					*11.50	7.66	*9.00	5.42	7.05	4.07	5.47	3.16	4.64	2.66	7.73
2					*12.96	7.18	9.24	5.14	6.85	3.89	5.35	3.05	4.49	2.55	7.80
1					13.34	6.91	9.00	4.94	6.69	3.75	5.25	2.96	4.47	2.52	7.75
0 (Ground)			*8.57	*8.57	13.20	6.81	8.86	4.82	6.59	3.66	5.18	2.90	4.60	2.58	7.56
-1	*8.95	*8.95	*12.28	11.33	13.19	6.79	8.8	4.77	6.54	3.62	5.15	2.88	4.91	2.74	7.23
-2	*12.63	*12.63	*15.52	11.43	*12.48	6.84	8.82	4.79	6.55	3.63			5.49	3.07	6.74
-3	*16.60	*16.60	*13.74	11.61	*11.19	6.96	8.92	4.87	6.64	3.71			6.58	3.68	6.03
-4	*13.53	*13.53	*11.17	*11.17	*9.19	7.16	*7.34	5.04					*7.26	4.99	5.03

Option 2

Boom: 5700 mm - Arm: 2900 mm - Bucket: SAE 0.92 m³ HEAPED (CECE 0.81 m³) - Shoe: 800 mm

Units: 1000 kg

B (m) \ A (m)	2		3		4		5		6		7		8		9		Max. lift		A (m)
8							*4.77	*4.77									*3.95	*3.95	5.48
7							*5.46	*5.46	*4.66	*4.66							*3.75	*3.75	6.43
6							*5.76	*5.76	*5.61	4.72	*4.06	3.54					*3.69	3.42	7.13
5					*7.02	*7.02	*6.40	6.28	*5.97	4.59	*5.38	3.48					*3.73	2.96	7.62
4	*17.47	*17.47	*11.08	*11.08	*8.62	8.62	*7.31	5.98	*6.51	4.41	5.76	3.37					*3.85	2.66	7.96
3			*15.02	12.91	*10.49	8.05	*8.37	5.64	*7.15	4.21	5.62	3.25	4.49	2.57			*4.05	2.47	8.16
2			*7.98	*7.98	*12.16	7.49	*9.37	5.32	7.05	4.01	5.49	3.13	4.41	2.49			4.21	2.37	8.23
1			*7.79	*7.79	*13.23	7.12	9.25	5.07	6.86	3.85	5.37	3.02	4.34	2.42			4.19	2.34	8.18
0 (Ground)			*9.50	*9.50	13.49	6.93	9.06	4.91	6.73	3.72	5.28	2.94	4.29	2.38			4.29	2.38	8.00
-1	*8.70	*8.70	*11.88	11.35	13.41	6.86	8.96	4.83	6.65	3.66	5.23	2.89					4.53	2.51	7.69
-2	*11.36	*11.36	*14.82	11.44	*12.92	6.87	8.95	4.81	6.63	3.64	5.22	2.89					4.98	2.76	7.23
-3	*14.30	*14.30	*15.04	11.6	*11.89	6.96	9.00	4.86	6.68	3.68							5.79	3.22	6.58
-4	*16.51	*16.51	*12.79	11.85	*10.27	7.12	*8.29	4.98									*7.07	4.12	5.68
-5			*9.50	*9.50	*7.65	7.40			*9.50								*6.96	6.42	4.37

1. The nominal forces are based on the SAE J1097 standard.
2. The load point is the hook at the rear of the bucket.
3. * = The nominal loads are based on hydraulic capacity.
4. The nominal loads do not exceed 87% of the hydraulic capacity or 75% of the capacity of the swing.

: Nominal force
 : Nominal force at the side or 360°



* Standard equipment

• Hydraulic system

- Boom and arm flow regeneration
- Boom and arm holding valves
- Swing anti-rebound valves
- Spare ports (valve)
- One touch power boost
- Breaker piping

• Cab & Interior

- Heated, adjustable air suspension seat with adjustable headrest and armrest
- Pressurised, sound-insulated and viscous support mounted cab
- Air conditioning
- Pull-up type front window and removable lower front window
- Ceiling light
- Intermittent windshield wiper
- Cigarette lighter and ashtray
- Cup holder
- Hot and cool box
- 7" (18 cm) LCD colour monitor panel
- Engine speed (RPM) control dial
- AM/FM radio
- Remote radio ON/OFF switch
- 12V spare power socket
- Serial communication port for laptop PC interface
- Joystick lever with 3 switches
- Cab pack: sun visor, sun roof and rain shield
- Wiper

* Optional equipment

• Safety

- Cab top/front guards (ISO 10262, FOGS standard)

• Cab & Interior

- MP3/CD player

• Safety

- Overload warning device
- Rotation beacon
- Light on counterweight
- Rear view camera
- Large handrails and step
- Punched metal anti-slip plates
- Seat belt
- Hydraulic safety lock lever
- Safety glass
- Hammer for emergency escape
- Right and left rearview mirrors
- Travel alarm
- Emergency engine stop

• Other

- Fuel filling pump
- Double element air cleaner
- Fuel pre-filter
- Dust screen for radiator/oil cooler
- Engine overheat prevention system
- Engine restart prevention system
- Self-diagnostic function
- Alternator (24V, 60 A)
- Electric horn
- Halogen work lights (4 front-mounted, 2 rear-mounted, 2 boom-mounted, 1 frame-mounted & 1 rear side)
- Boom: monobloc 5.70 m – arm: 2.90 m
- Counterweight 6480 kg

• Undercarriage

- Hydraulic track adjuster
- Track guards
- Greased and sealed track link
- 600 mm triple grouser shoe

• Other

- Piping for crusher
- Piping for quick clamp
- Breaker filter
- Arm: 2.40 m
- Buckets: 0.51, 0.81, 0.92, 1.05, 1.17, 1.28 m³ & skeleton

• Undercarriage

- 700 mm/800 mm/900 mm shoe

Doosan Infracore

The pulse of transformation



Construction Equipment

Machine Tools

Forklift Trucks

Engines

The spirit of challenge and innovation has led Doosan. We started out as a small store in Seoul in 1896 and have expanded into a global company. Today we are engaged in the infrastructure support business (ISB), which encompasses industrial facilities, machinery, heavy equipment and construction. You can also encounter the Doosan brand in various other industries.

You are invited to take a closer look at the new world that is being built by Doosan, visit us at www.doosaninfracore.com



Doosan Infracore
Construction Equipment